

AGRICULTURE, LAND REFORM AND RURAL DEVELOPMENT-EDT&M

PRESENTATION:UL STUDENTS

BY

J. MAGOMANI

NOVEMBER 2020

Tel: 012 319 8021

Email: JoshuaM@dalrrd.gov.za



**agriculture, land reform
& rural development**

Department:
Agriculture, Land Reform and Rural Development
REPUBLIC OF SOUTH AFRICA



**STAY
SAFE**

PROTECT SOUTH AFRICA

TOGETHER WE CAN BEAT THE CORONAVIRUS

PRESENTATION OUTLINE

- ❑ STRATEGIC OVERVIEW
- ❑ EDT&M STRUCTURE
- ❑ ECONOMIC INDICATORS
- ❑ DUTIES: AGRIC ECONOMIST

STRATEGIC OVERVIEW

VISION

Equitable access to land, integrated rural development, sustainable agriculture and **food security** for all

MISSION

To accelerate land reform, catalyse rural development and improve agricultural production to stimulate economic development and food security through :

- transformed land ownership patterns
- agrarian reform
- implementation of an effective land administration system
- sustainable livelihoods
- innovative sustainable agriculture
- promotion of access to opportunities for youth, women and other vulnerable groups
- integrated rural development



agriculture, land reform
& rural development

Department:
Agriculture, Land Reform and Rural Development
REPUBLIC OF SOUTH AFRICA

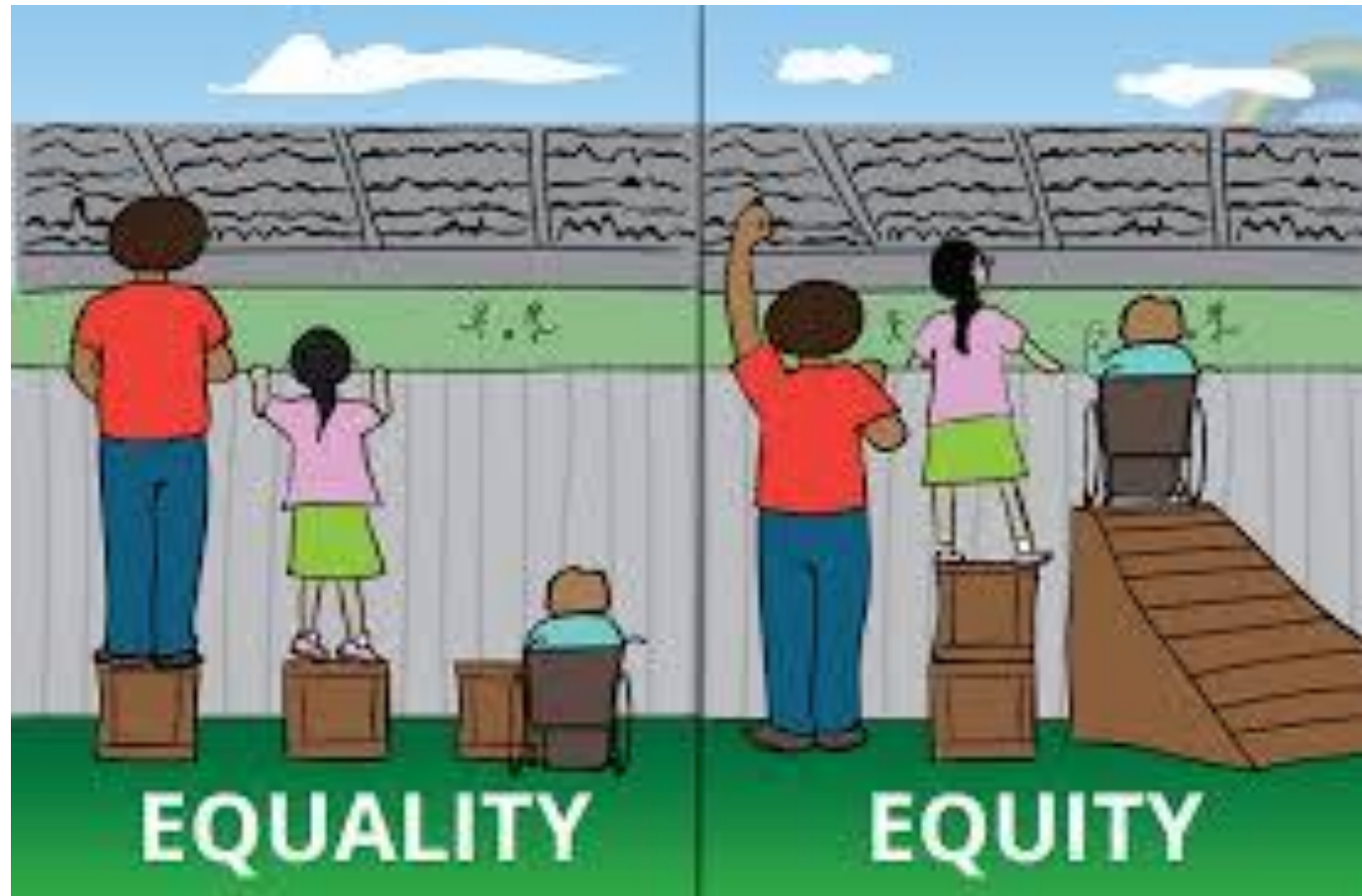


PROTECT SOUTH AFRICA

TOGETHER WE CAN BEAT THE CORONAVIRUS

STRATEGIC OVERVIEW CONT...

EQUITY



agriculture, land reform
& rural development

Department:
Agriculture, Land Reform and Rural Development
REPUBLIC OF SOUTH AFRICA



**STAY
SAFE**

PROTECT SOUTH AFRICA

TOGETHER WE CAN BEAT THE CORONAVIRUS

STRATEGIC OVERVIEW CONT...

FOOD SECURITY

Food security exists when all people, at all times, have physical, social and economic access to sufficient, safe and nutritious food which meets their dietary needs and food preferences for an active and healthy life (FAO).

STRATEGIC OVERVIEW CONT...

VALUES

- People centred service standards**
- Courtesy and compassion**
- Professionalism and accountability**
- Effective communication and transparency**
- Respect and integrity (ethics and honesty)**

.



agriculture, land reform
& rural development

Department:
Agriculture, Land Reform and Rural Development
REPUBLIC OF SOUTH AFRICA

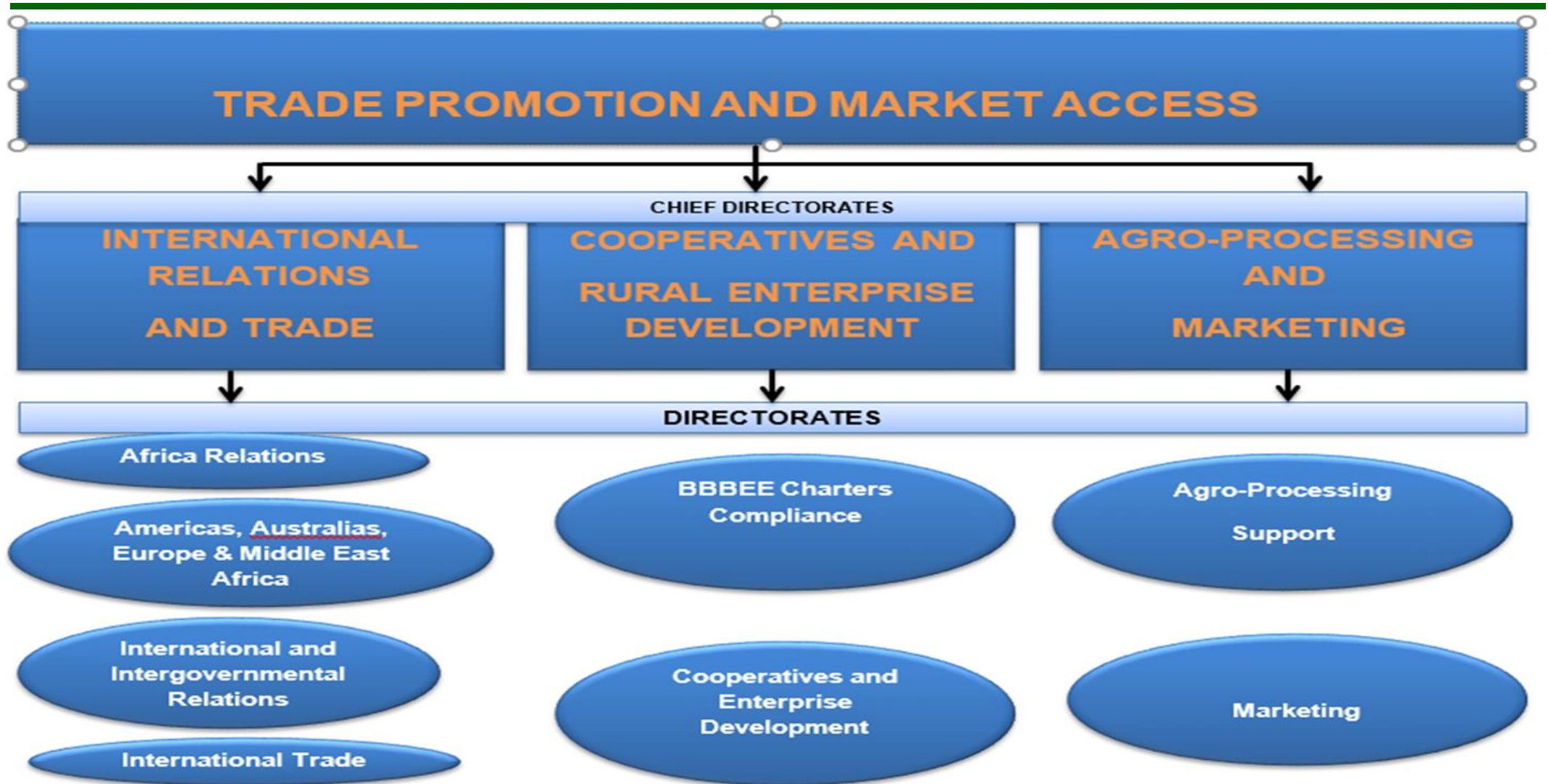


**STAY
SAFE**

PROTECT SOUTH AFRICA

TOGETHER WE CAN BEAT THE CORONAVIRUS

STRUCTURE



11/11/20



agriculture, land reform
& rural development

Department:
Agriculture, Land Reform and Rural Development
REPUBLIC OF SOUTH AFRICA



**STAY
SAFE**

PROTECT SOUTH AFRICA

TOGETHER WE CAN BEAT THE CORONAVIRUS

ECONOMIC INDICATORS

Sector	GDP share(%)	Employment share(%)
Agriculture	2.4	5.8
Manufacturing	13.7	8.7
Agro-processing	4.4	3.5

Source: Stats SA

ECONOMIC INDICATORS CONT...

Commodities	Average: 2015 - 2019		
	Employment	Production Value R'000	Black Farmer Share in Output
Maize	29,289	27,038,097	4.7%
Soybean	7,654	5,698,270	3.1%
Wheat	2,912	5,805,830	1.3%
Cotton	3,876	1,967,187	2.4%
Citrus	128,219	15,046,134	12.8%
Deciduous	79,443	15,660,627	10.2%
Viticulture	163,441	7,057,260	1.6%
Potato	42,158	6,972,320	1.0%
Tomato	9,764	2,364,149	8.6%
Wool	23,976	3,397,506	11.0%
Mohair	6,765	554,582	12.8%
Cattle	89,752	31,992,265	34.0%
Poultry	52,836	47,863,345	4.2%

Source: NAMC

DUTIES OF AN AGRIC ECOMOMIST

- Provides marketing info services
- Facilitates access to market outlets
- Promotes agricultural marketing
- Promotes and supports agro-processing and value addition
- Conducts trade analysis
- Provides financial advice/support services
- Trains farmers i.e. record keeping, business planning
- Assists in cooperative development
- Provides statistics services
- Develops and maintains computerized databases
- Populates databases with agricultural statistics and trends
- Writes statistics reports/compile documents, etc.
- Provides policy analysis/sector analysis/impact analysis

DUTIES OF AN AGRIC ECONOMOMIST CONT...

- Conducts agricultural development planning
- Conducts project appraisal/business plan development and evaluation
- Takes responsibility to veto projects if not sustainable
- Supports agricultural business/value adding
- Does agricultural economics modeling
- Gives farm management advice
- Studies input/output relationships
- Evaluates economics of scale
- Evaluates farming systems
- Evaluates different land tenure arrangements
- Gives financial advice/record keeping
- Provides farm management and economic advice

QUESTIONS?

Thank you

Website

<https://www.dalrrd.gov.za/>