



**RBIDZ**  
Special Economic Zone

# RBIDZ PRESENTATION

## ESKOM & ELECTRICITY MINISTER VISIT

MAY 2024



# Contents

---

**1**

RBIDZ Overview

**2**

ESKOM Site

**3**

Energy Hub

**4**

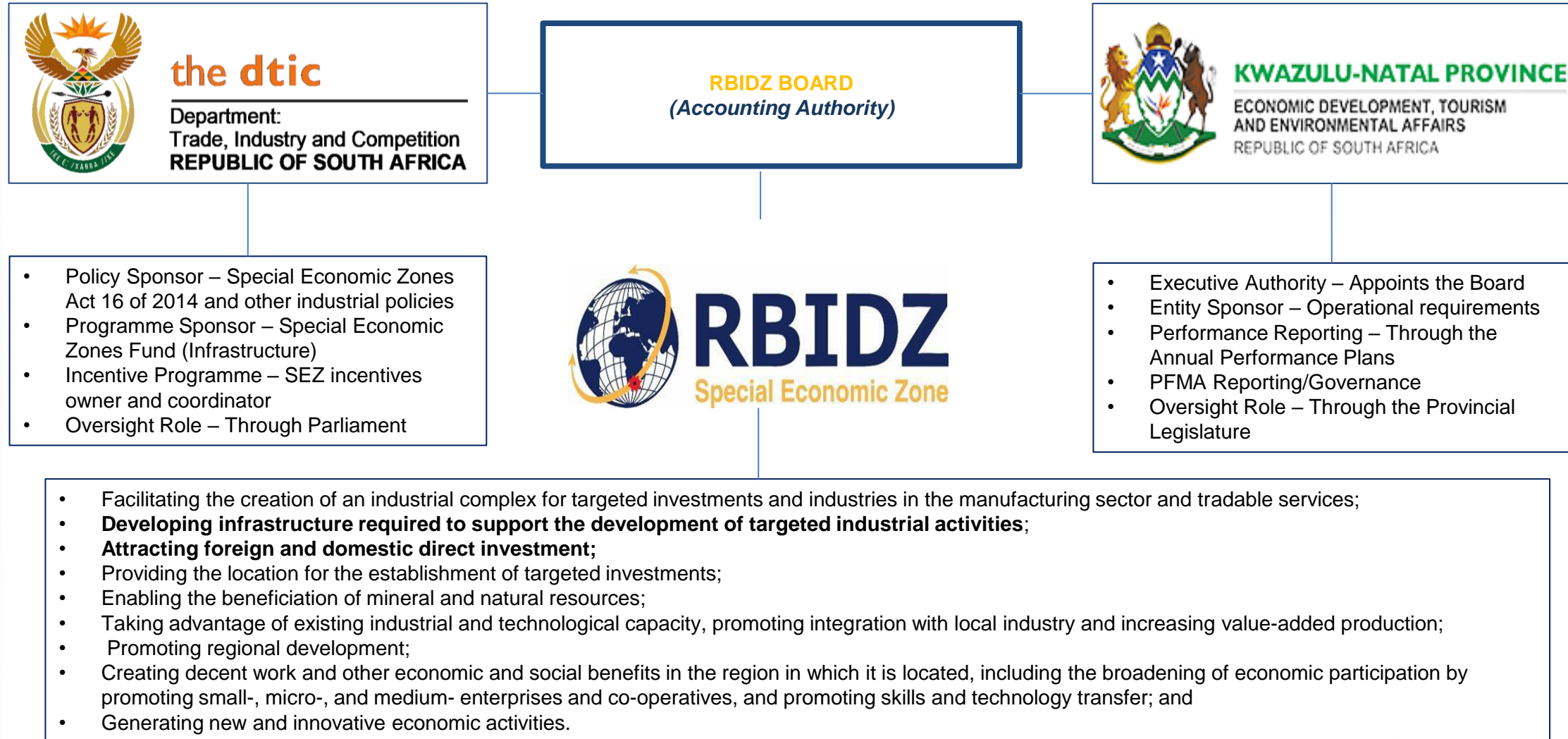
Enabling Energy  
Infrastructure

**5**

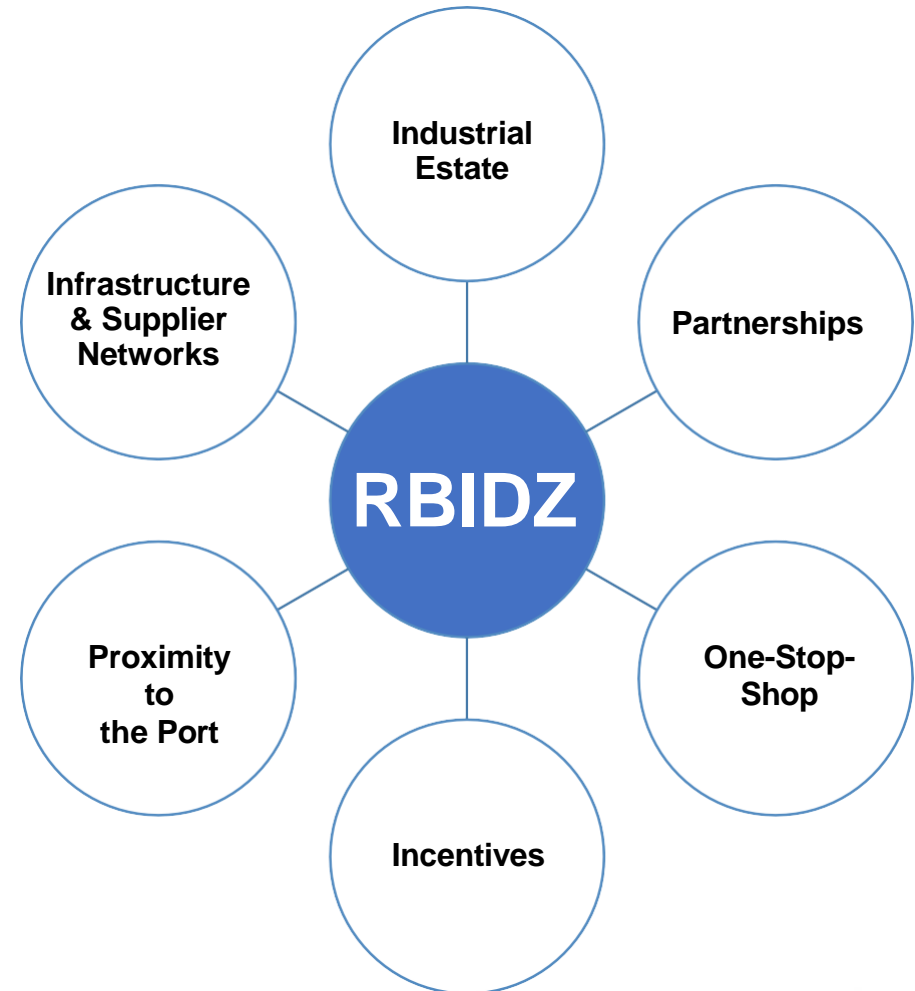
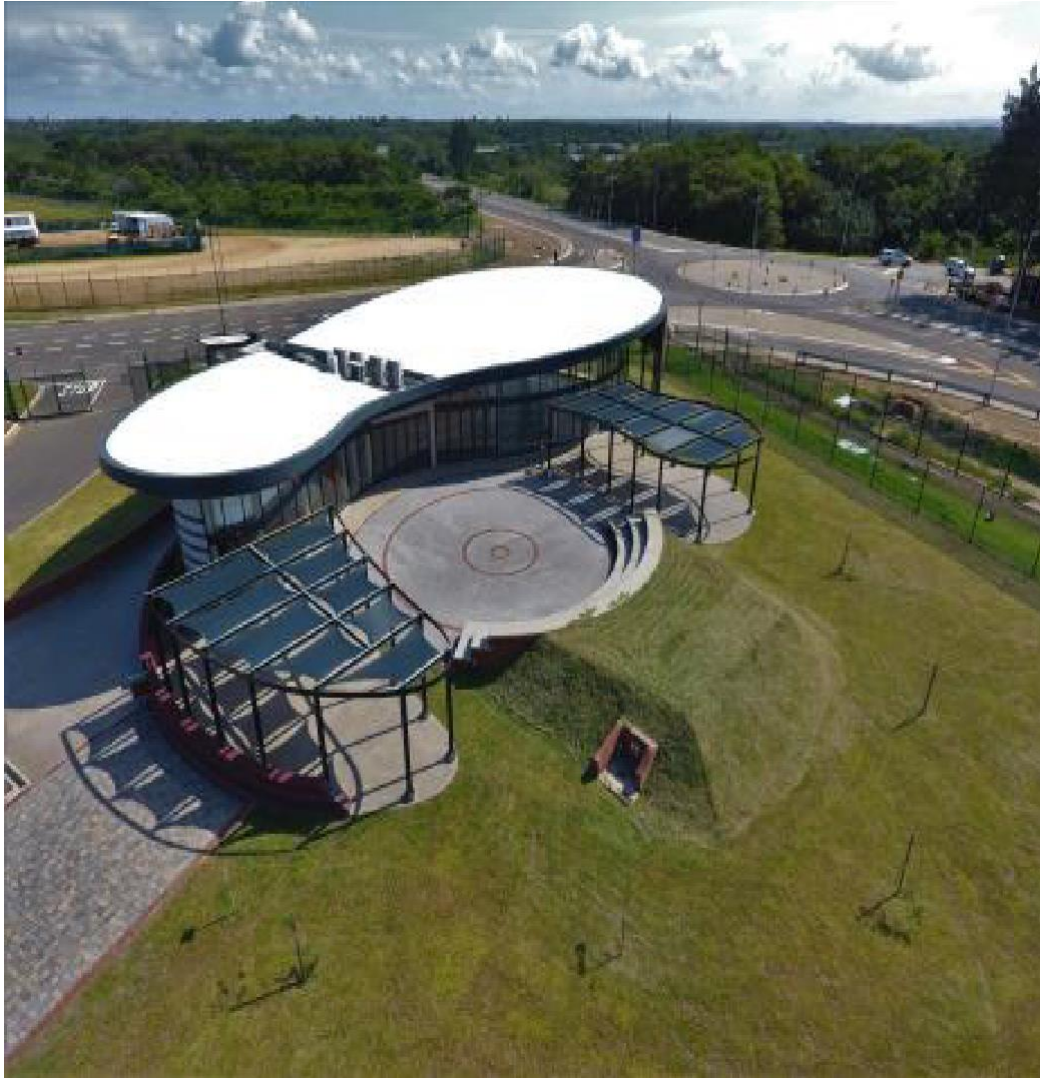
Concluding Remarks



# RBIDZ Overview



# RBIDZ Overview - Value Proposition



# RBIDZ Overview - Incentives

- Dedicated in-house **Customs Controlled Area (CCA)** that supports services to expedite forwarding and clearing;
- **Duty-free on imports** for production-related raw materials including machinery and assets used in production with the aim of exporting the finished products;
- **VAT exemptions** under specific conditions for supplies procured in South Africa.
- **The 12i Tax incentive** is designed to support greenfield investments (i.e. new industrial projects that utilize only new and unused manufacturing assets), as well as brownfield investments (i.e. expansions or upgrades of existing industrial projects). The new incentive offers support for both capital investment and training.
- **Preferential 15% Corporate Tax.** Businesses (prescribed in Section 24(4) of the SEZ Act) that are located in a Special Economic Zone may be eligible for tax relief, including the reduced rate of corporate income taxation.



# RBIDZ Overview - Sector Focus

Metal/Mineral Beneficiation

Agro-processing

**Energy**

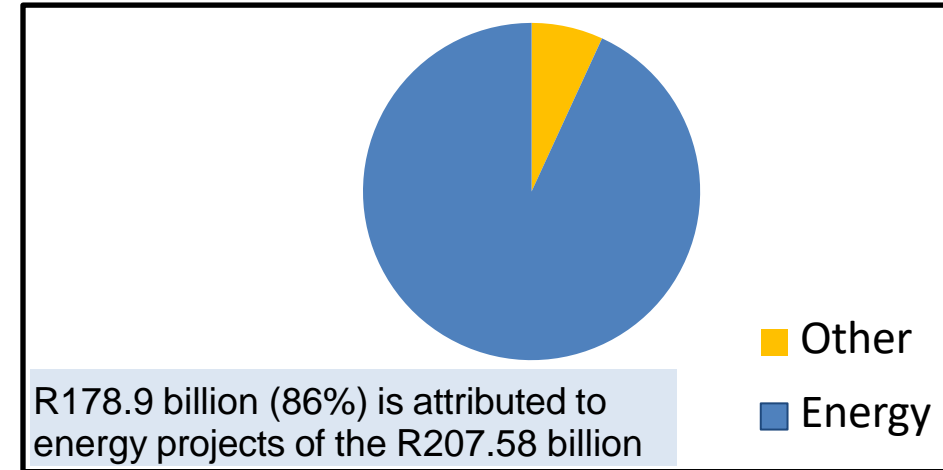
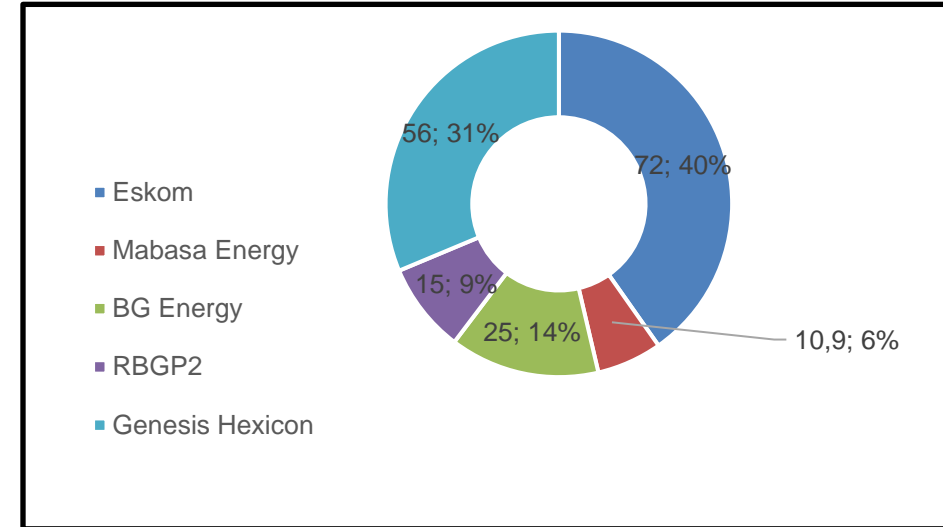
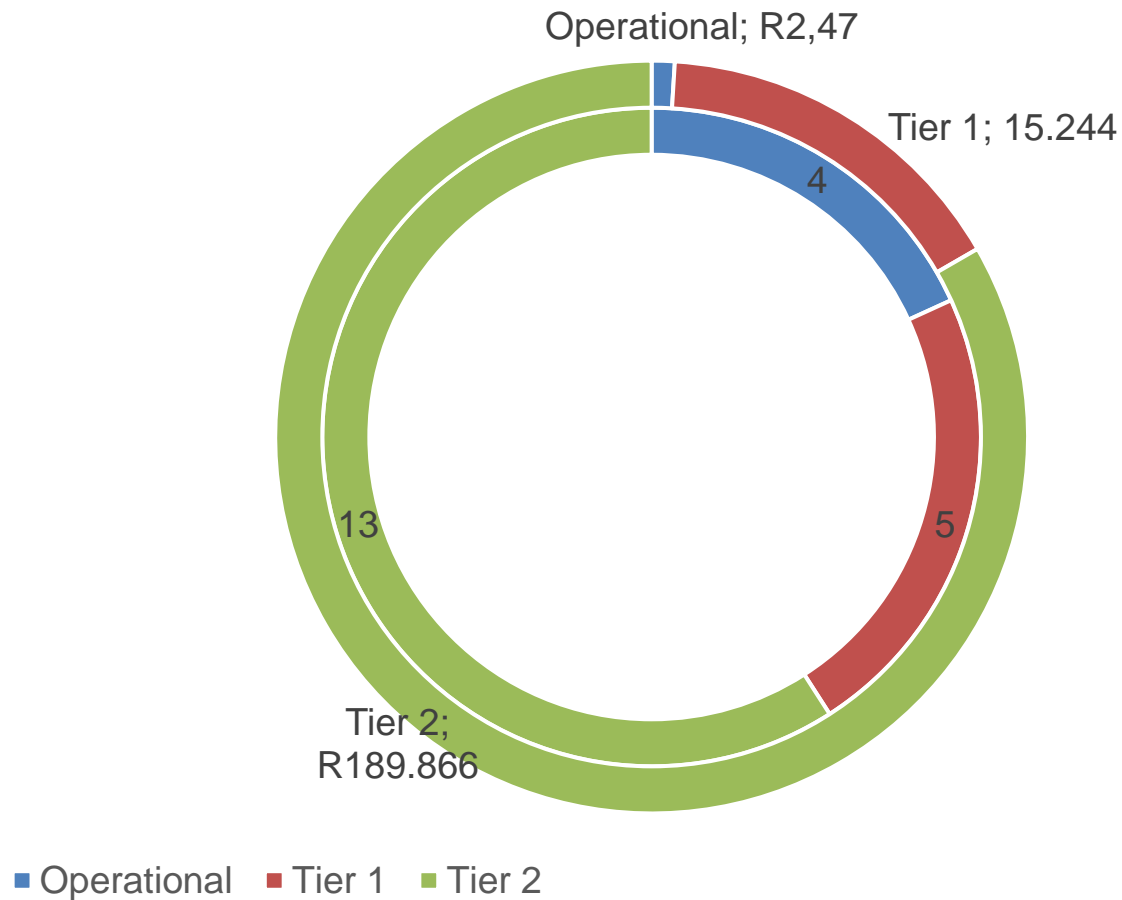
Marine Industry

Technology and Innovation



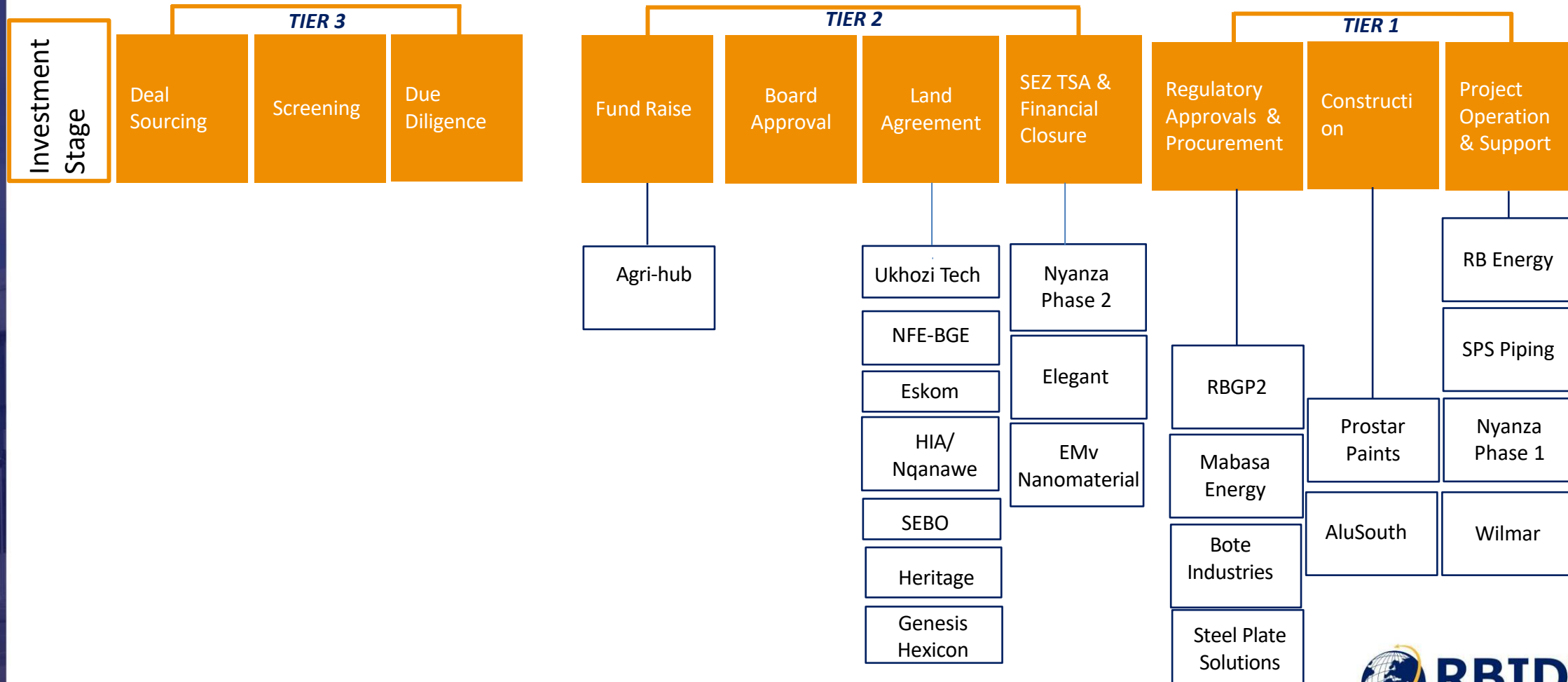
# RBIDZ Overview - Pipeline Overview

Investment Pipeline (R'Bn)



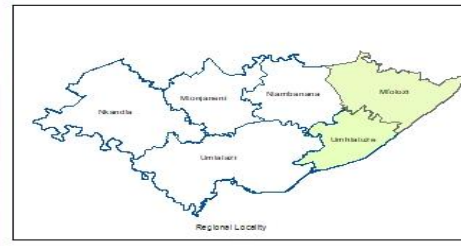
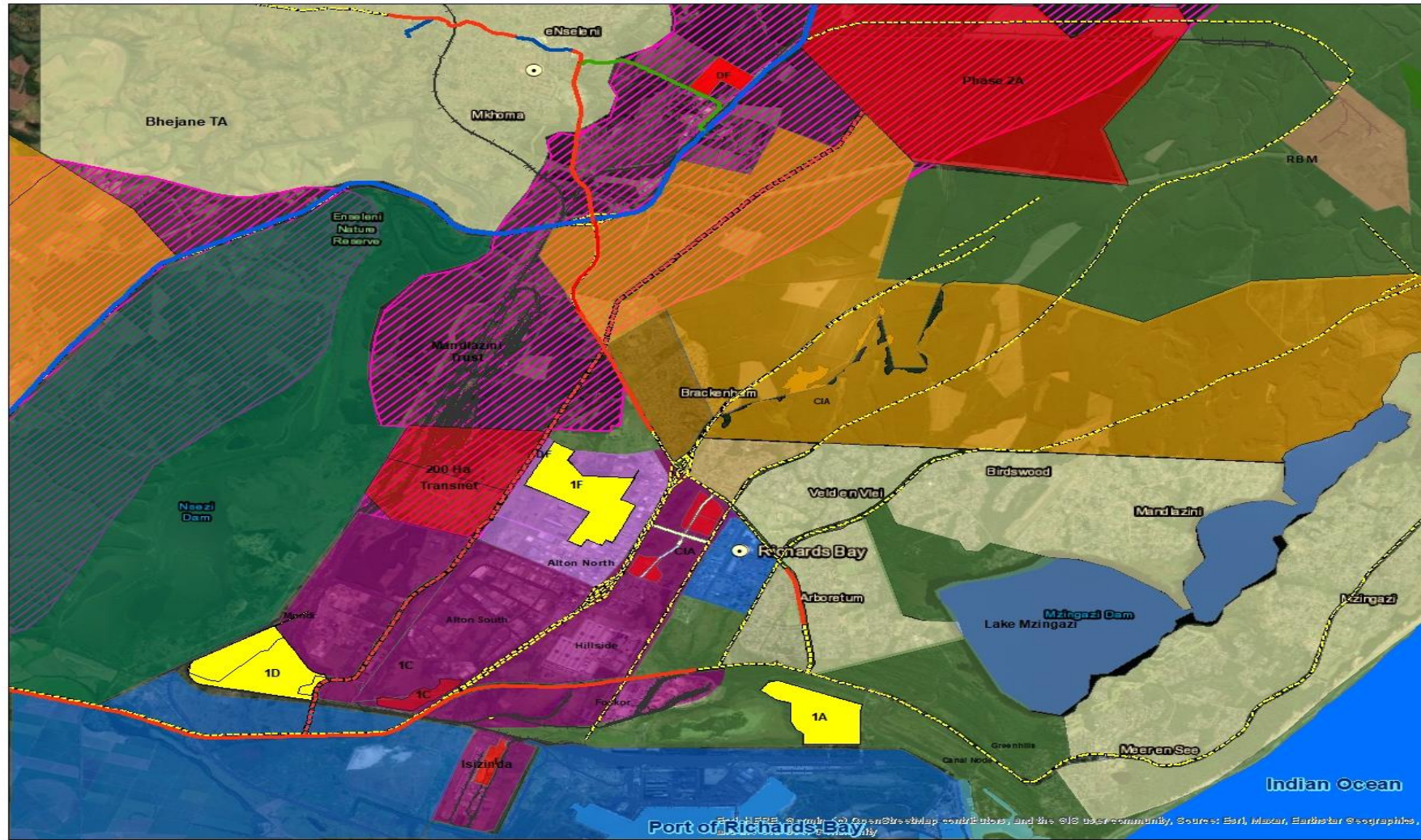
# RBIDZ Overview - Pipeline Overview

## RBIDZ VALUE PROPOSITION





# RBIDZ Overview – Masterplan



Drawing Ref: MasterPlan/2024/Update  
 Map Drawn By: M Dlamini  
 Date : 02 May 2024

**LEGEND**

- To wns
- Western\_Arterial\_Road
- Proposed Future Roads
- Phase\_1A
- Phase\_1F\_
- Phase\_1D
- Phase\_1D\_Conservation\_area1
- Phase\_1D\_Conservation\_area2
- Phase1C
- Phase 1D 65 Ha
- Phase 1D Road Portion
- Phase 1D Wetland
- Phase 1D Grassland
- Phase 2A
- CIA
- DF - Davidson Farm
- Transnet
- Alton\_Industrial
- Industrial
- SDF\_port\_expansion
- RBM
- H = Hulamin
- Davidson Opt 2
- Railway\_Lines
- Future Residential Expansion
- Proposed Development Corridor Zones
- Plantations

Date : 05 May 2024  
 Umhlatuze  
 Nkandla  
 Mkhambane  
 Mlotshwa  
 Mkhambane  
 Mlotshwa  
 Umhlatuze  
 Source: uMhlatuze SDF (2023)  
 uMfolozi SDF (2022)

**Richards Bay Industrial Development Zone Master Plan Update**

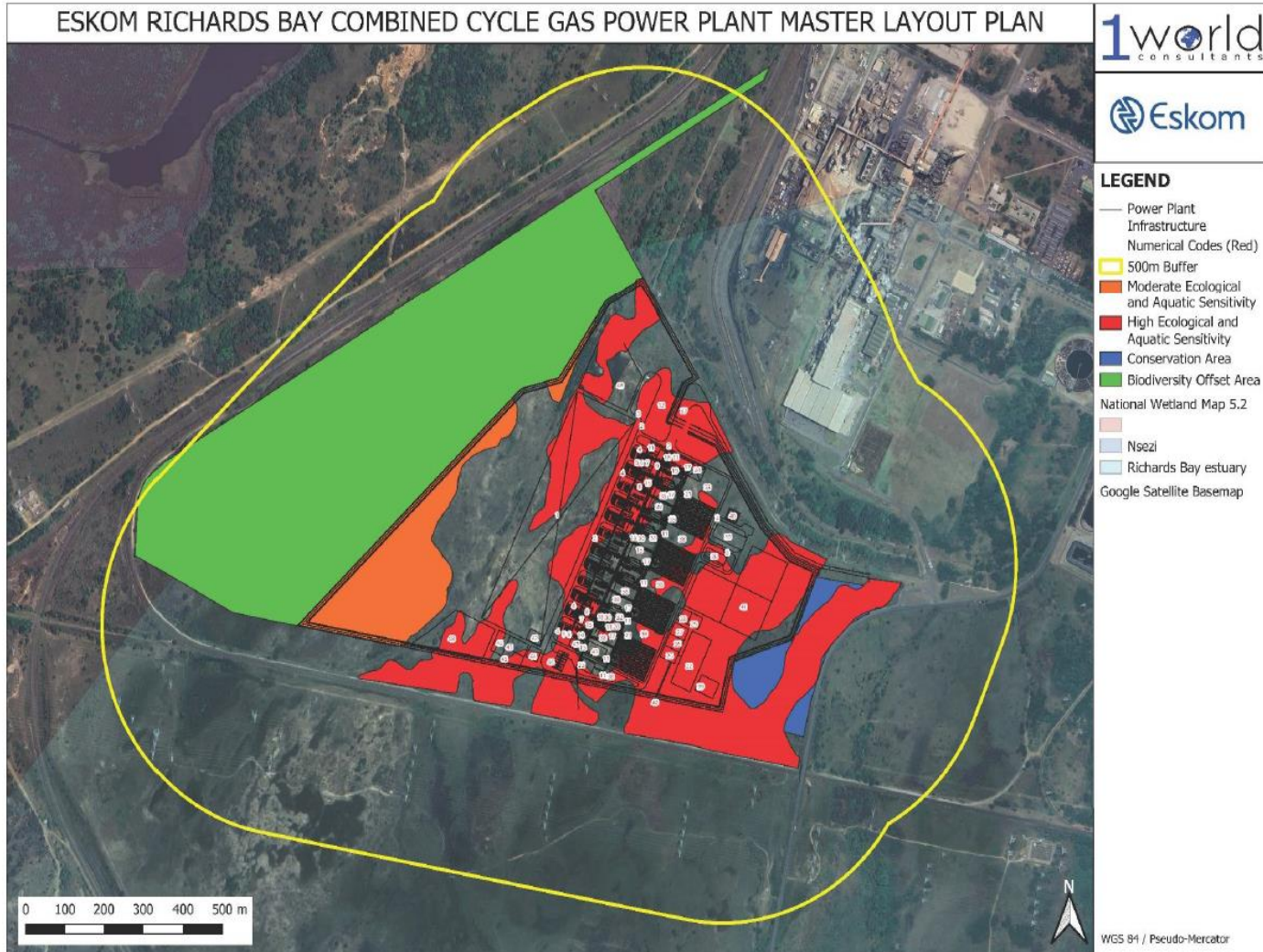
Scale: 1:100 000

Property Name	Phase 1A	Phase 1F	Davidson Farm	Isizinda	Phase 1D	CIA	Transnet	Phase 2A	Phase 1C
Extent	94,92	130,25	20	17,31	130,27	41	100/200	1200	83,37



# ESKOM SITE

# ESKOM Site – Phase 1D



# ESKOM Site – Phase 1D

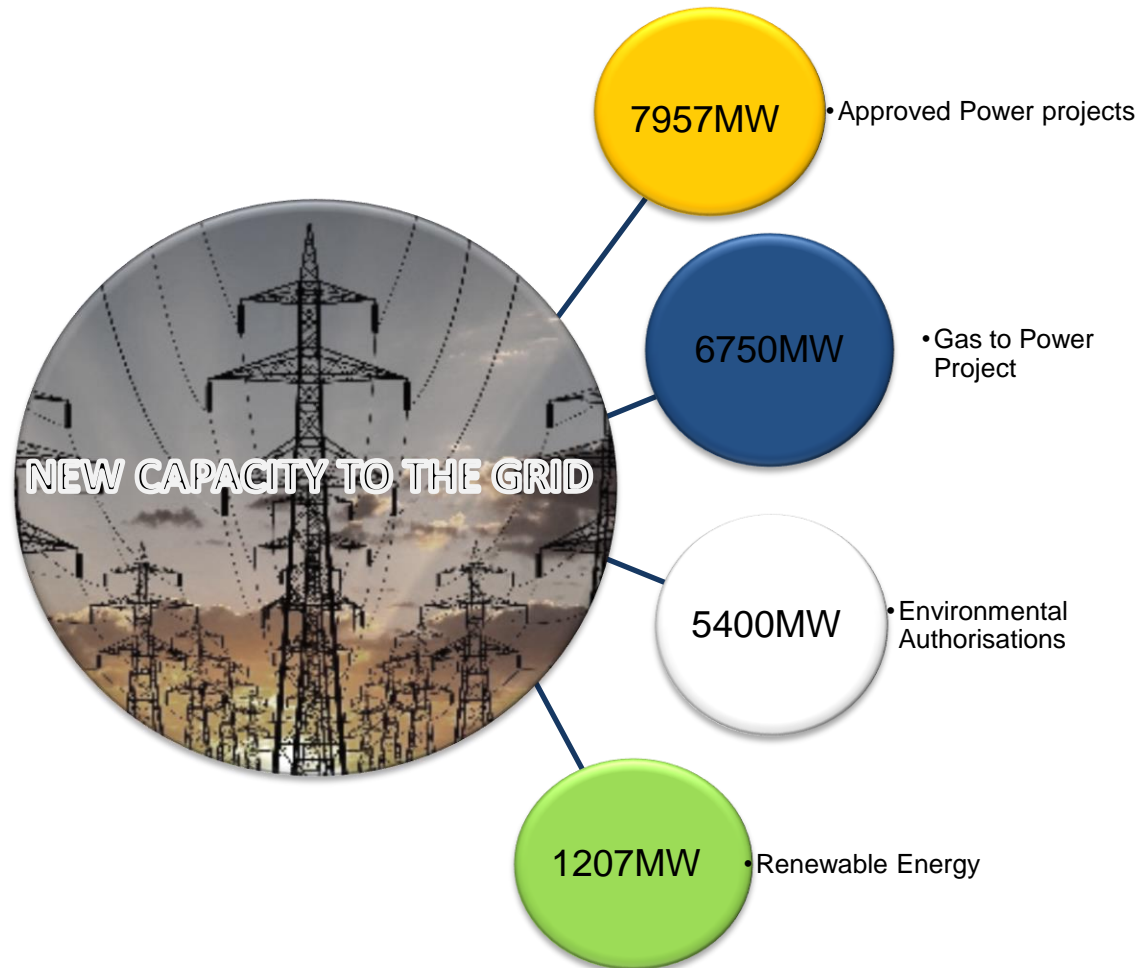
28 July 2023 - Phase 1D Serviced Site HIGH-LEVEL Cost Estimate - 64 ha		
Item	Description	Amount
1	Bulk Engineering Contributions (to ascertain this cost with CoU as Eskom will be producing Electricity)	R65 000 000,00
2	Municipal connection fee (60A 3-phase)	R98 000,00
3	Municipal Plans Submission Fees (Guardhouse and RBIDZ Offices only)	R125 000,00
4	Standby Generator + DeepSea ATS + Plint + Wooden Fence, 250kVA (Essential Equipment and lighting)	R800 000,00
5	Streetlighting (9m) with PV and batteries (x30 @ R18k)	R540 000,00
6	3CR12 IP65 Streelights kiosks (x3 @ R67k)	R201 000,00
7	16mm x 4c Copper underground cable, inclusive of trenching (±1km @ R500/m)	R500 000,00
8	Security and Guardhouse Building + Gates + Turnstiles + HVAC + Electrical, etc (ref Phase 1A and 1F)	R25 000 000,00
9	CCTV (camers, poles, fibre optics, kiosks, trenching, etc + control room equipment, injectors, PoE's)	R10 000 000,00
10	Access Control System	R2 500 000,00
11	Fibre Lines	R3 200 000,00
12	Servers	R3 500 000,00
13	Bayside Office - Links to Phase 1D	R700 000,00
14	Phase 1D - data, phones, video conference and etc	R800 000,00
15	Guardhouse Hybrid PV System and associated interface (60A - 3phase)	R2 700 000,00
16	Clearvu Fence (anticlimb) + electrics, energiser kiosks, SCADA, all inclusive (±5km @ R3800/m)	R19 000 000,00
17	Roads (±1km x 5.5m wide @ R3 000 0000/km)	R3 000 000,00
18	Roadside Kerbs (±1km x 2 opposite side @ R 250/1m.kerb)	R500 000,00
19	Pedestrian walkways (±1km x 2m wide for 1 one side only @ R300/m <sup>2</sup> )	R600 000,00
20	Stormwater (benchmarked with Phase 1A)	R 2 800 000,00
21	Water (benchmarked with Phase 1A)	R 3 200 000,00
22	Sewer (benchmarked with Phase 1A)	R 6 650 000,00
23	Substation	R6 000 000,00
24		
25		
26	<b>Grand Total (excluding VAT, Escalation, Contingencies and any unforeseen)</b>	<b>R144 764 000,00</b>

**Funding source (s):**  
The dtic SEZ Fund/BFI

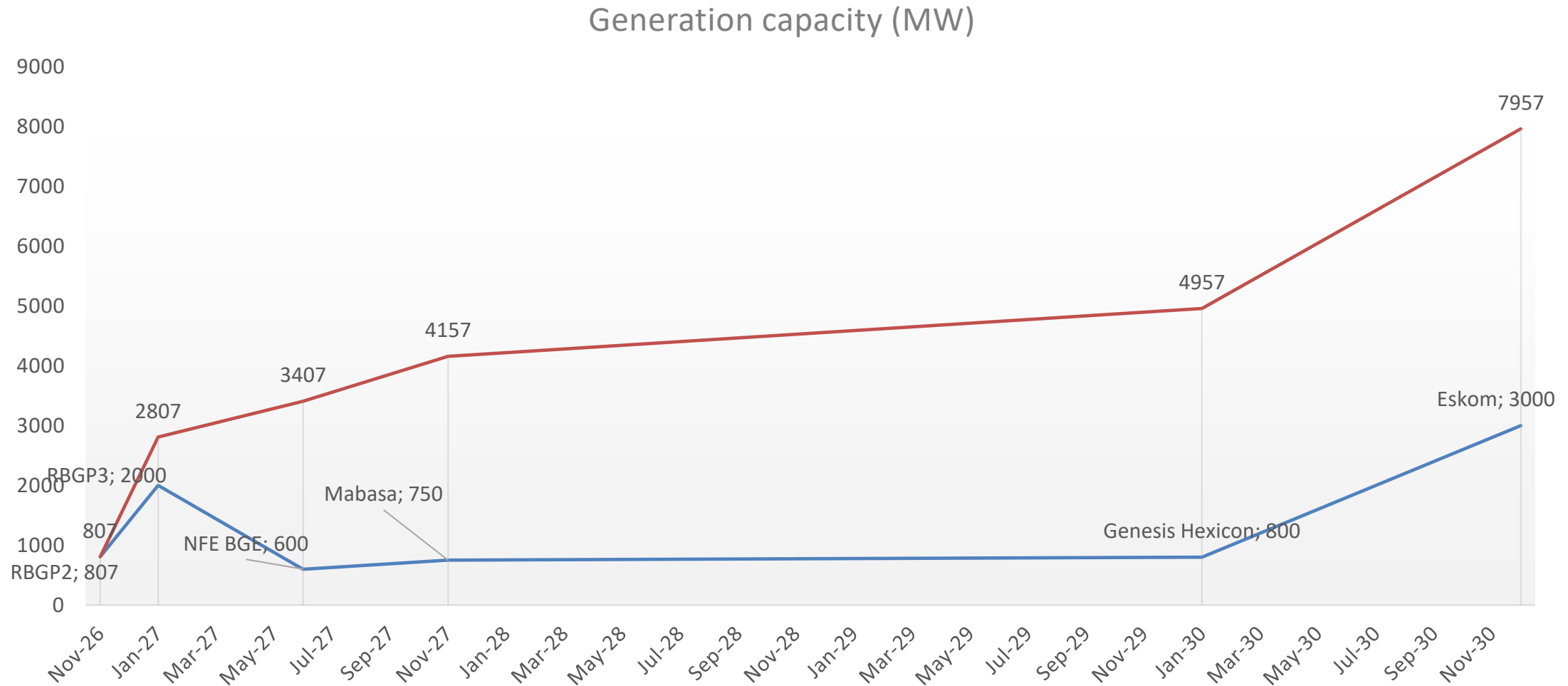
**Timelines:**  
Servicing of the site is projected to commence in November 2024 and is expected to be completed by July 2025

# ENERGY HUB

# Energy Hub – Overview



# Energy Hub – Projects Implementation Schedule



# Energy Hub – Projects

COMPANY	PROJECT DESCRIPTION	PHASE OF DEVELOPMENT	NEXT PHASE	CONSTRUCTION COMPLETION DATES	RISKS	INTERGRATION/ COLLABORATION
BGE	Gas To Power (LNG), 600 Mw Scaling Up To 2000 Mw	Permitting and Authorisation	Complete Required Studies Commence Marketing Drive from Nov to Feb 2024	July 2027	<ul style="list-style-type: none"> <li>Port License being declined</li> <li>NERSA Licenses being declined</li> <li>EIA approval</li> <li>Environmental Objection</li> </ul>	<ul style="list-style-type: none"> <li>Transnet</li> <li>City of Umhlatuze</li> <li>Mandlazi Community Trust</li> </ul>
Genesis Hexicon (Pty) Ltd	Offshore Wind Power Plant	<ul style="list-style-type: none"> <li>Board approved</li> <li>EIA underway</li> </ul>	<ul style="list-style-type: none"> <li>Scoping Report</li> <li>Request MEC support</li> </ul>	January 2030	<ul style="list-style-type: none"> <li>EIA Declined</li> </ul>	<ul style="list-style-type: none"> <li>MEC tenure over area off the coast of Richards Bay</li> </ul>
PHAKWE RBGP2	400 MW Gas to Power and 407 MW of Solar	<ul style="list-style-type: none"> <li>EIA obtained for the 400MW plant and the 2000MW Plant</li> <li>The 400MW plant is vendor financed (Fully Funded)</li> </ul>	Awaiting the next IPP Bid Window for gas projects  Exploring additional offtakes by participating in municipal RFP's	November 2026	<ul style="list-style-type: none"> <li>Not being successful in the IPP bid window process</li> <li>Environmental Objection</li> <li>Transnet approving expedited plan for an FSRU</li> <li>Transnet LNG terminal being delayed</li> <li>Reticulation infrastructure for gas</li> </ul>	<ul style="list-style-type: none"> <li>Transnet approving interim arrangement for an FSRU</li> <li>LNG Import Terminal</li> <li>Pipeline from the Port to Phase 1F</li> </ul>
PHAKWE RBGP3	2000 MW	EIA awarded	Bidding towards the IPP processes	January 2027	<ul style="list-style-type: none"> <li>Bid unsuccessful within the IPP process</li> </ul>	<ul style="list-style-type: none"> <li>LNG Import Terminal</li> <li>Pipeline from the Port to Phase 1F</li> </ul>

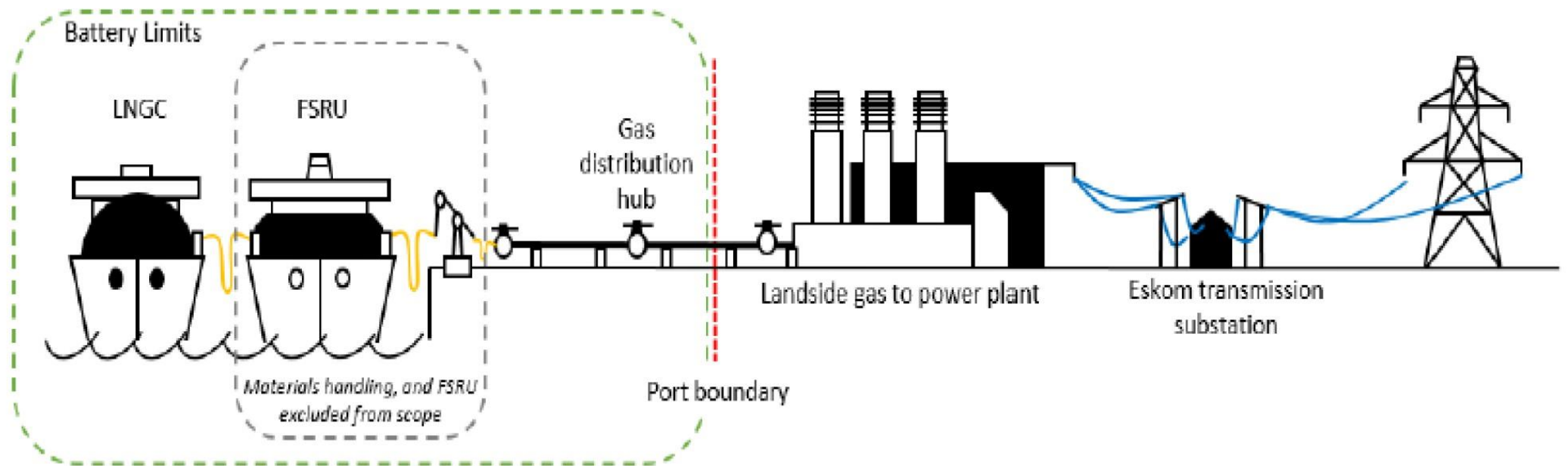


# Energy Hub – Projects

COMPANY	PROJECT DESCRIPTION	PHASE OF DEVELOPMENT	NEXT PHASE	CONSTRUCTION COMPLETION DATES	RISKS	INTERGRATION/ COLLABORATION
ESKOM	3000 MW Gas to Power Plant	Permitting and Authorisation - EIA granted but contested through courts  Section 34 determination received	Appointment of Transactional Advisor for the PPP/PSP approach	December 2029- December 2030	Environmental Objection  Transnet LNG terminal being delayed  Reticulation infrastructure for gas  National Treasury approvals for the PPP/PSP approach	LNG Import Terminal  Pipeline from the Port to Phase 1F
MABASA	750 MW Gas to Power Plant	Fully Funded Project  Permitting and Authorisation Phase	Awaiting the next IPP Bid Window for gas projects  Exploring additional offtakes by participating in municipal RFP's and other C&I customers including RBIDZ tenants	Nov 2027	Not being successful in the IPP bid window process  Environmental Objection  Transnet approving expedited plan for an FSRU  Transnet LNG terminal being delayed  Reticulation infrastructure for gas	Transnet approving interim arrangement for an FSRU  LNG Import Terminal  Pipeline from the Port to Phase 1F

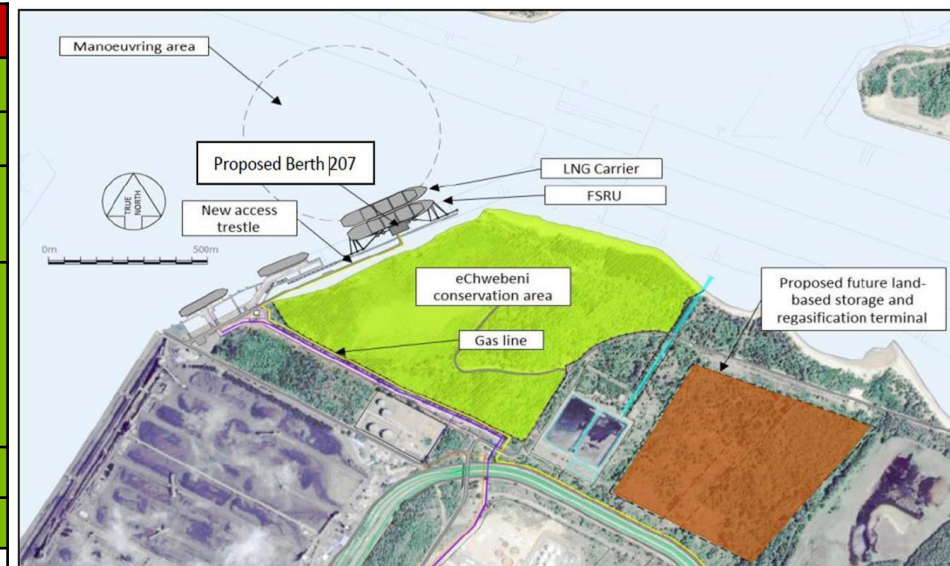
# ENERGY INFRASTRUCTURE

# Enabling Energy Infrastructure – Configuration (G-T-P)



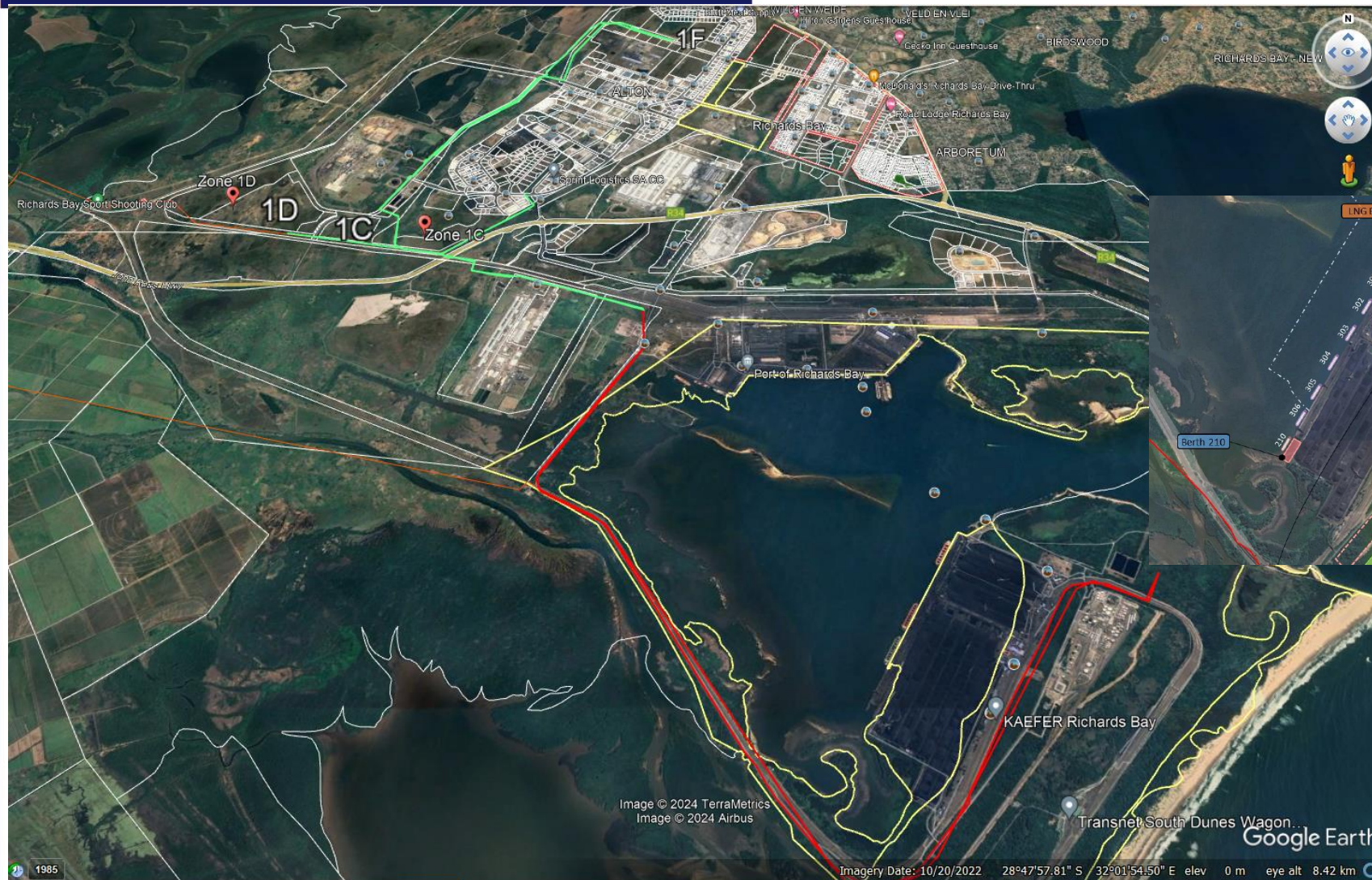
# Enabling Energy Infrastructure – LNG Terminal Update

Activity:	Deadline:	Status
Issue of the RFP	15 December 2022	Completed
Established TNPA-IPPO Energy Task Team	19 January 2023	Completed
Compulsory Briefing Session in Richards Bay	25 January 2023	Completed
Registration of Project with Infrastructure South Africa (Presidency) for Strategic Integrated Projects (SIP20: Oil and Gas Gazette)	30 April 2023	Approved
Bid Submission Closing Date	29 July 2023	Completed
Evaluation of Tender(s)	29 September 2023	Completed
Appointment of Terminal Operator (Section 56)	December 2023	On track
Design and Construction of FSRU/FSU	January 2024 – March 2027	On track
Award Common User Infrastructure Contract (RFP)	March 2024	On track
Appointment of Environmental Practitioner (EIA)	November 2023 (18 months)	On track
Design of Common User Infrastructure	April 2024 – February 2025	On track
Construction of Common User Infrastructure	June 2025 – March 2027	On track
Commissioning	March 2027 – June 2027	On track
Project close-out	September 2027	On track

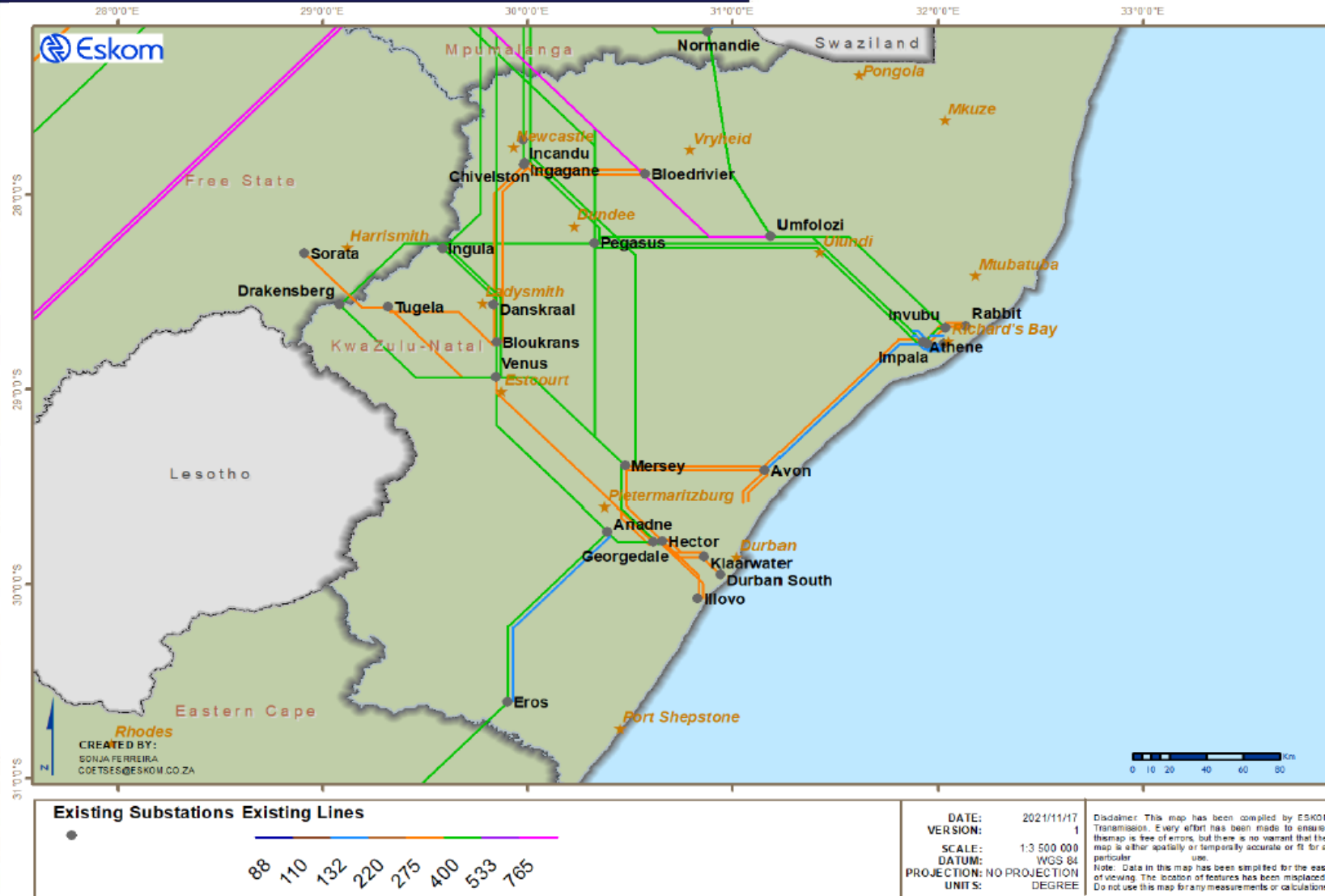


- The Liquefied Natural Gas (LNG) importation infrastructure (terminal) at the Port of Richards Bay at Berth 207 will include:
  - A Floating Storage Regasification Unit (FSRU) or Floating Storage Unit (FSU);
  - Marine infrastructure and Associated gas pipelines (Common User Infrastructure); and
  - TNPA will invest in the Marine and Common User Infrastructure and the Terminal Operator investing in the FSRU or FSU.

# Enabling Energy Infrastructure – LNG Pipeline



# Enabling Energy Infrastructure – Grid (evacuation)



- The main transmission supply network to KwaZulu-Natal is predominantly connected at 400 Kv (enhancements up to 765KV), with the local transmission stations mostly connected at 275 Kv
- Ability to evacuate 5000 MW
- Provincial demand: 6 341 MW in 2022
- Expected to grow to 7562 MW by 2031

(Eskom TDP, 2022)

# Concluding Remarks

---

- Conclude outstanding agreements
- Focus on site preparation and readiness
- Planning consideration and securing the required servitudes
- Manage the dependencies and alignment on the infrastructure readiness
- Strategy for Environmental Lobby Groups
- Gas Sourcing Strategy
- Gas pricing, competitiveness and global markets

*(IDC proposed structure)*

THANK YOU



W W W . R B I D Z . C O . Z A



ISO 9001 & 14001 certified organisation