

**SAFDA presentation to the
DTIC Portfolio Committee**
11 May 2021



SA FARMERS
DEVELOPMENT
Association



A home for all progressive farmers

*A year from now
you may wish you
had started Today*

Karen Lamb



Introducing SAFDA

- Established on the 25th November 2015.
- Walked out of the SA Cane Growers' Association.
- Registered as an NPO with footprint in KZN and Mpumalanga provinces.
- Focus on unique challenges confronting black farmers in the sugar sector and beyond.
- Home for all progressive farmers black, white, large, small.

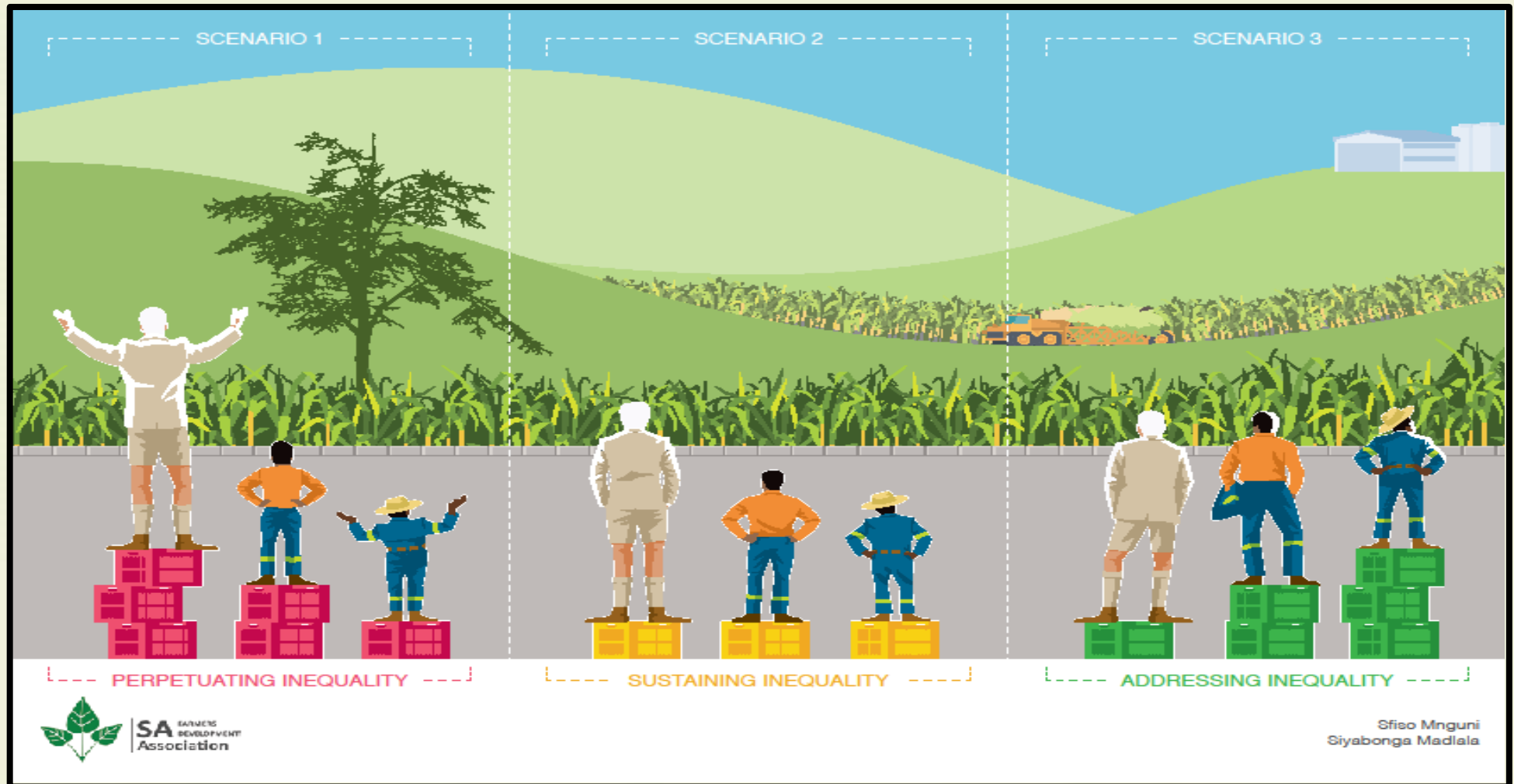


A home for all progressive farmers.



SA FARMERS
DEVELOPMENT
Association

Transformation



A home for all progressive farmers.



SA FARMERS
DEVELOPMENT
Association

Our Journey



A home for all progressive farmers.



SA FARMERS
DEVELOPMENT
Association

Our Journey

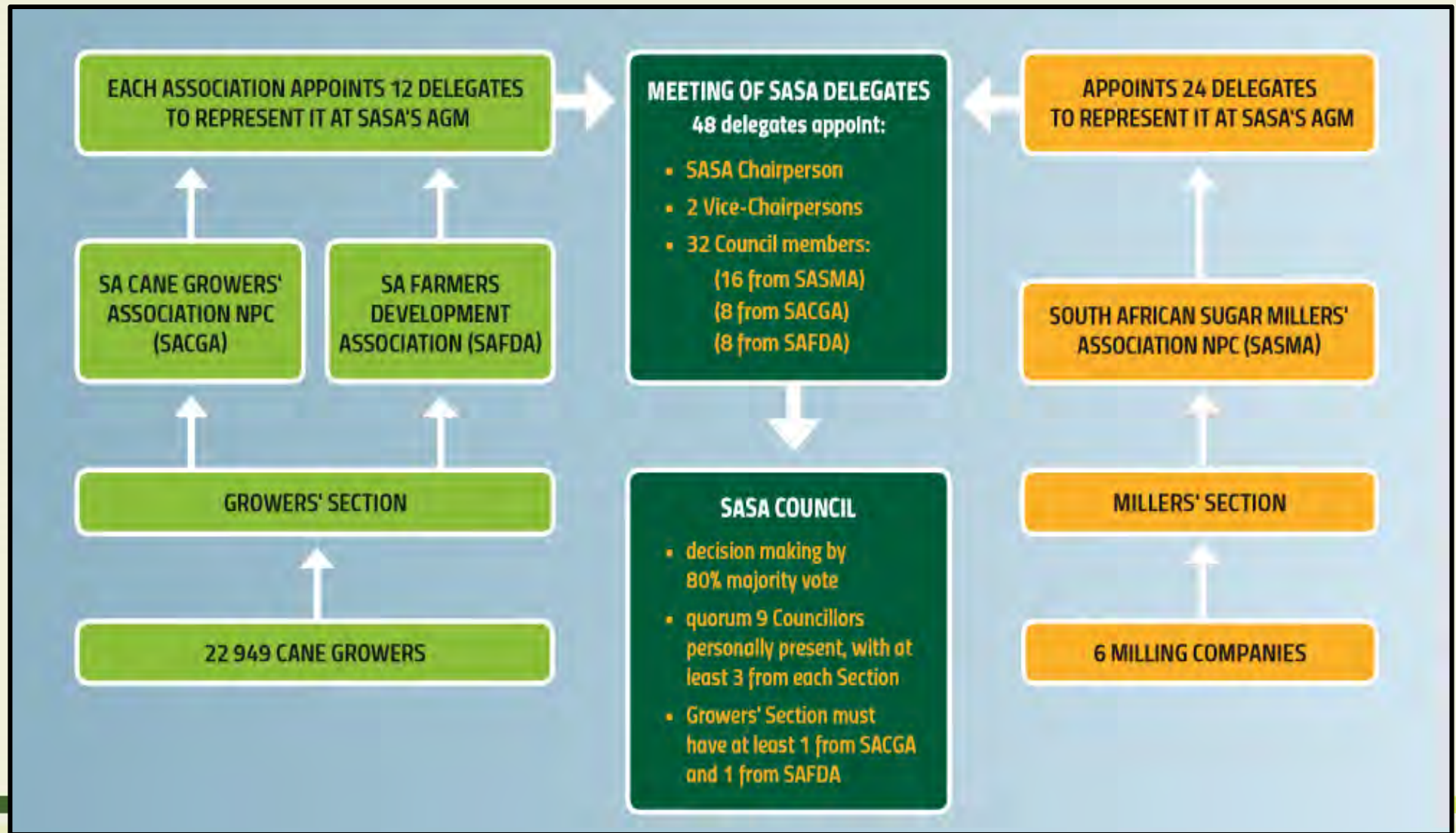


A home for all progressive farmers.



SA FARMERS
DEVELOPMENT
Association

SAFDA : permanent member of SASA

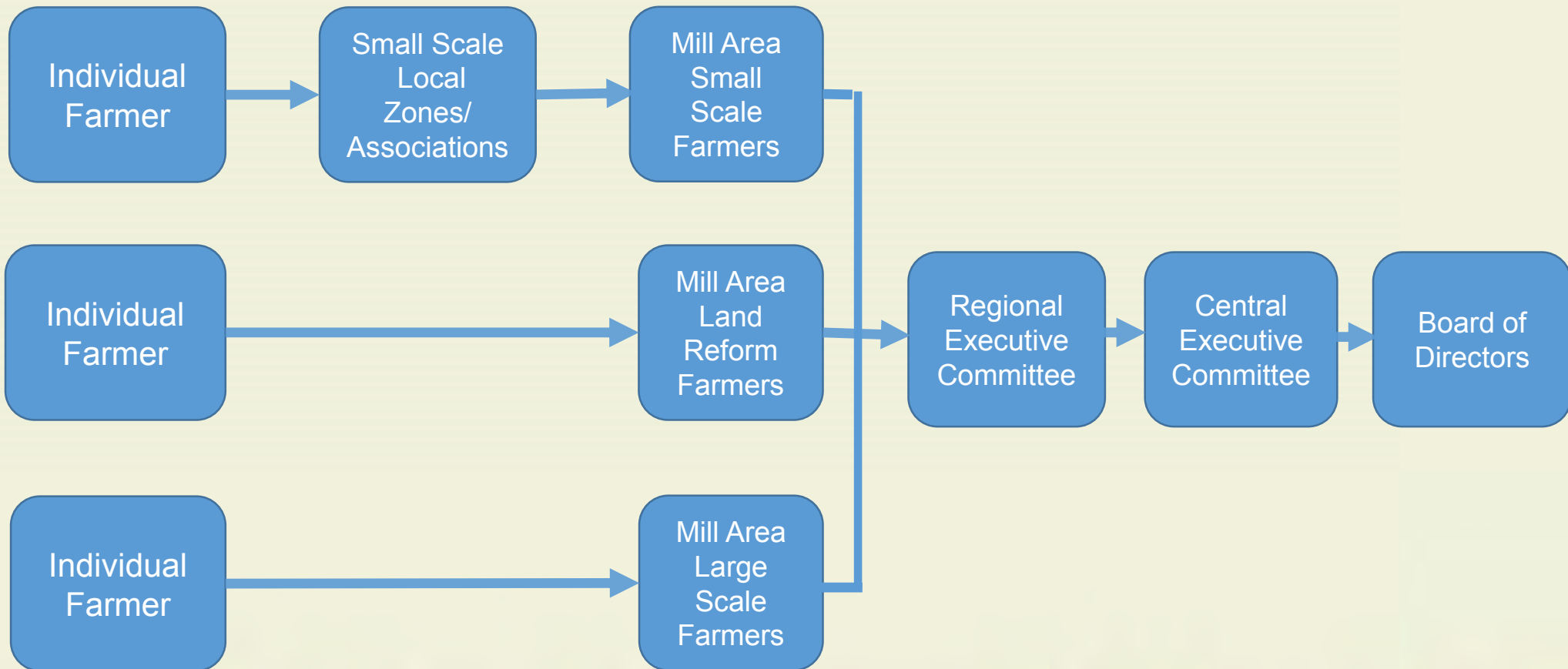


A home for all progressive farmers.



SA FARMERS
DEVELOPMENT
Association

Grower representation

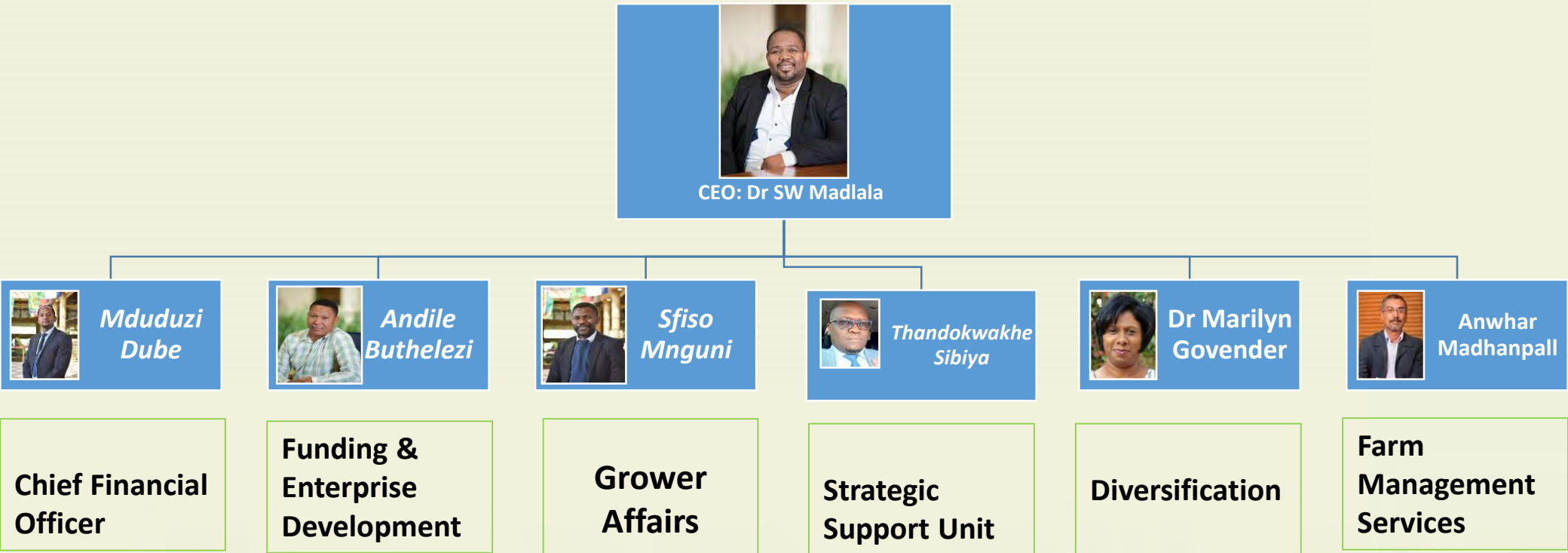


A home for all progressive farmers.



SA FARMERS
DEVELOPMENT
Association

SAFDA Group Organogram



A home for all progressive farmers.



SA FARMERS
DEVELOPMENT
Association

Strategic Focus Areas

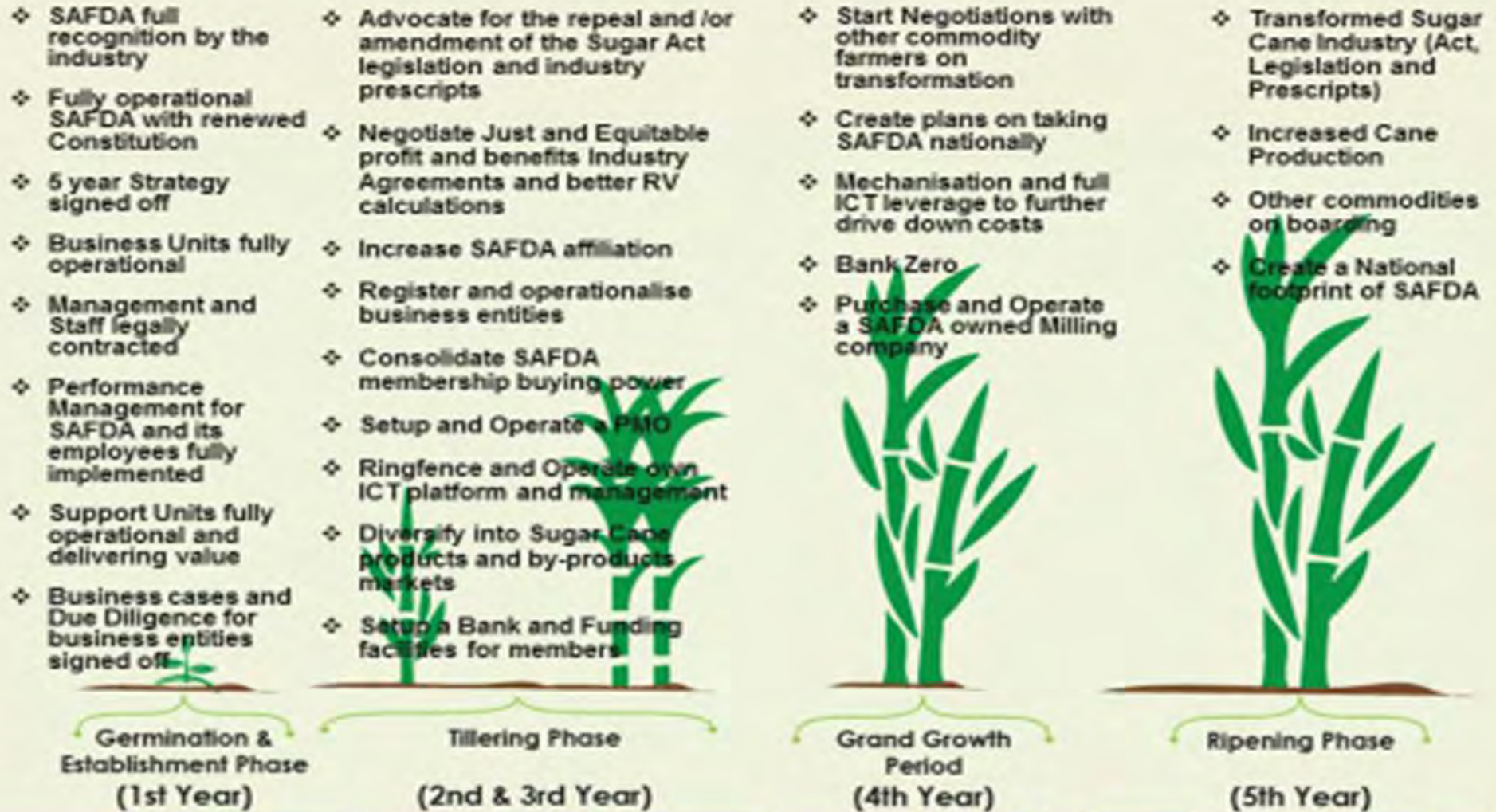


A home for all progressive farmers.



SA FARMERS
DEVELOPMENT
Association

SAFDA :five-year strategy



A home for all progressive farmers.



SA FARMERS
DEVELOPMENT
Association

Transforming the value chain



A home for all progressive farmers.



SA FARMERS
DEVELOPMENT
Association

SAFDA ASSETS

- TRACTORS
- CANE LOADERS
- TRUCKS
- BAKKIES
- IMPLEMENTS
- FIREFIGHTING EQUIPMENT
- HAULAGE FLEET







SAFDA ASSETS

- AVOCADO SPRAYING EQUIPMENT = R8 MILLION INVESTMENT ACROSS THREE MELMOTH COMMUNITIES



TRANSFORMATION FUND



A home for all progressive farmers.



SA FARMERS
DEVELOPMENT
Association

- Industry availed R1 billion Transformation Fund over 5 years: Transformation Fund.
- 8 Interventions to be implemented over 5 years that are impacting farmers positively.
- Intervention 6 looking at **institutional capacity building for new emerging black sugar cane grower associations** stops at year 3.
- SAFDA calls for Intervention 6 to **continue supporting its capacity building needs** as a new association that adds value to the industry.
- There is a need to guard against value capture that defeats the purpose and spirit of transforming the sugar sector.

MASTER PLAN



A home for all progressive farmers.



SA FARMERS
DEVELOPMENT
Association

- Master Plan has started delivering through securing the local market demand. **Sugarcane price** has been good for farmers thus far at above R5000 per RV tons).
- Small-scale are **foundational** in the Master Plan.
- **Premium Price for small-scale farmers** expected to be in place six months after the signing of the Master Plan. Master Plan signed on 19 November 2021. **Due in 19 May 2021.**
- Extension of Designation must happen once SSG Premium Price has been agreed.
- Tariff application should ensure **Reciprocity Commitments** are firm unlike 2018.

SIYABONGA



SA FARMERS
DEVELOPMENT
Association