

# **OVERVIEW OF SANAS & 2024/25 ANNUAL PERFORMANCE PLAN**

## **Presentation to the Portfolio Committee on Trade, Industry and Competition**

**21 August 2024**

# PRESENTATION OUTLINE

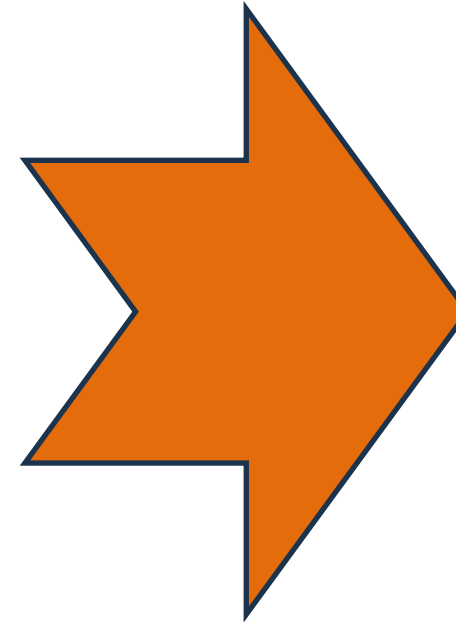
1. Overview of SANAS
2. SANAS International Recognition
3. SANAS Contribution to Government Priorities
4. Overview of SANAS 2024/25 APP Priorities
5. Financial Information for 2024/25 FY

# OVERVIEW OF SANAS

# HISTORY OF SANAS

1974 – 1996 Limited Company : Non- Profit : Section 21

2007 Public Entity



1974  
Establishment of  
the National  
Calibration  
Services (NCS)  
focused on the  
accreditation of  
✓ Calibration  
Labs

1992 National  
Laboratory  
Accreditation  
Services (NLA) –  
previously NCS  
✓ Calibration  
✓ Testing labs

1996 SANAS  
✓ Labs, Cert & Insp  
✓ 2000 OECD - GLP

2007 SANAS became a  
Public Entity –  
promulgation of the  
Accreditation for  
Conformity Assessment,  
Calibration and GLP Act  
19 of 2006

# SANAS VISION, MISSION & VALUES

## MISSION

To provide an internationally recognised national accreditation system in support of public policy objectives including trade facilitation for the betterment of our people



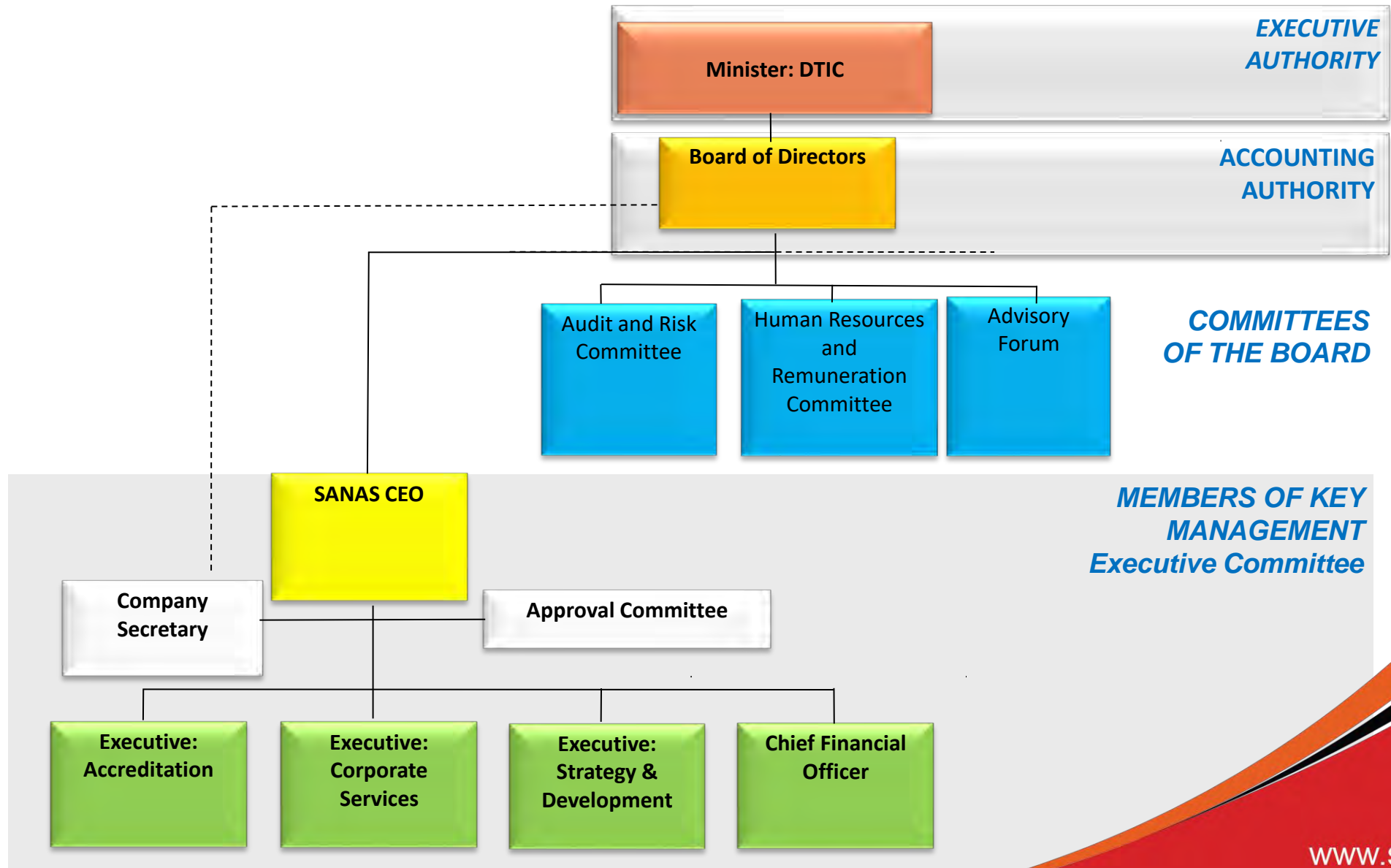
## VALUES

- ❖ Excellence
- ❖ Integrity
- ❖ Innovation
- ❖ Dedication
- ❖ Social

## VISION

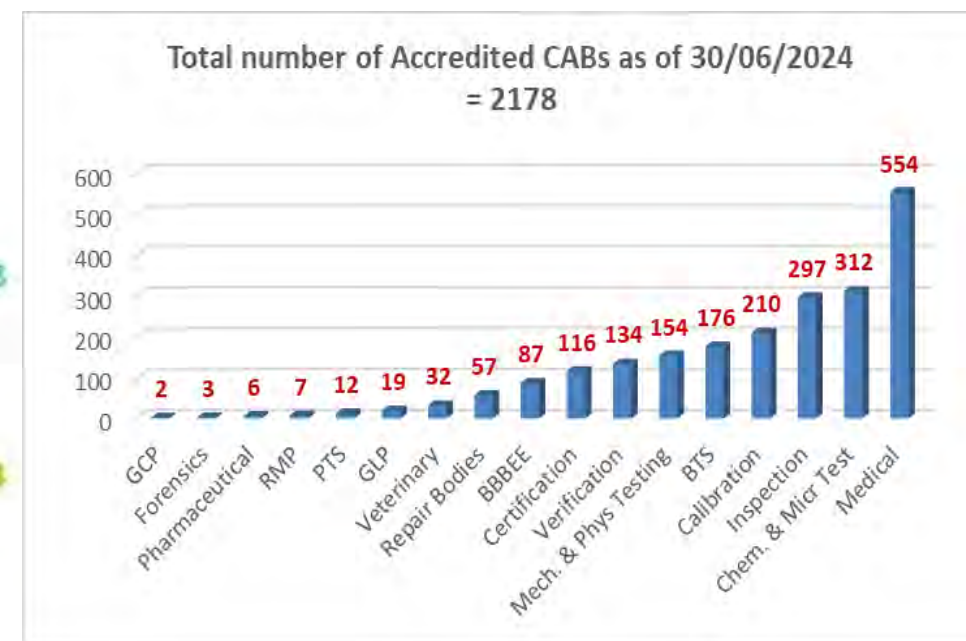
A better life through Accreditation

# GOVERNANCE STRUCTURE



# ACCREDITATION SERVICES

SANAS is the only national body responsible for carrying out accreditation in respect of conformity assessment, which includes the following accreditation services:



- ❑ SANAS is also recognised as the national body to monitor GLP compliance with the principles adopted by the OECD for GLP facilities.
- ❑ SANAS operates accreditation schemes in both the voluntary and regulatory sectors.

# SANAS LEGISLATIVE MANDATE

SANAS derives its mandate from the Accreditation of Conformity Assessment, Calibration and Good Laboratory Practice Act, 2006 (Act 19 of 2006) (*Accreditation Act*) and its purpose is to provide an internationally recognised and effective accreditation and monitoring system for the Republic, in order to:



Ensure a well-functioning technical infrastructure that is aligned to international best practices;



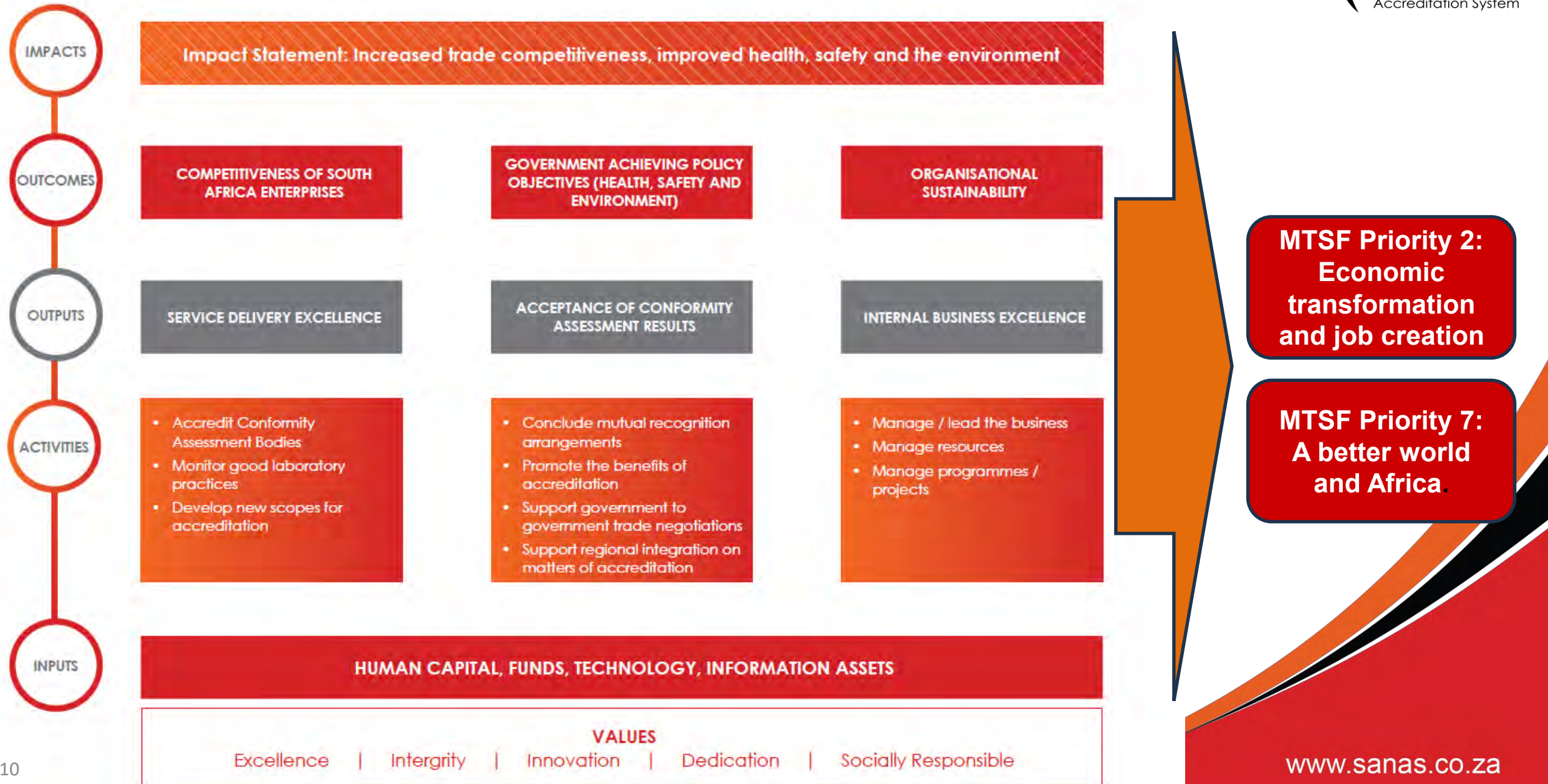
Support the needs of our enterprises competing in a fast-paced global economy;



Support public policy objectives in terms of health, safety and broad-based black economic empowerment compliance issues

- a) Promote the acceptance of SANAS' activities and those of all bodies accredited by SANAS or its international counterparts.
- b) Promote the recognition of accredited bodies by users of conformity assessment.
- c) Liaise with regional and international standards bodies, technical regulatory and metrology organisations in respect of matters relating to accreditation
- d) Liaise with national regulators in respect of matters relating to accreditation
- e) Promote the use of accredited bodies to facilitate trade.

# SANAS STRATEGIC FRAMEWORK

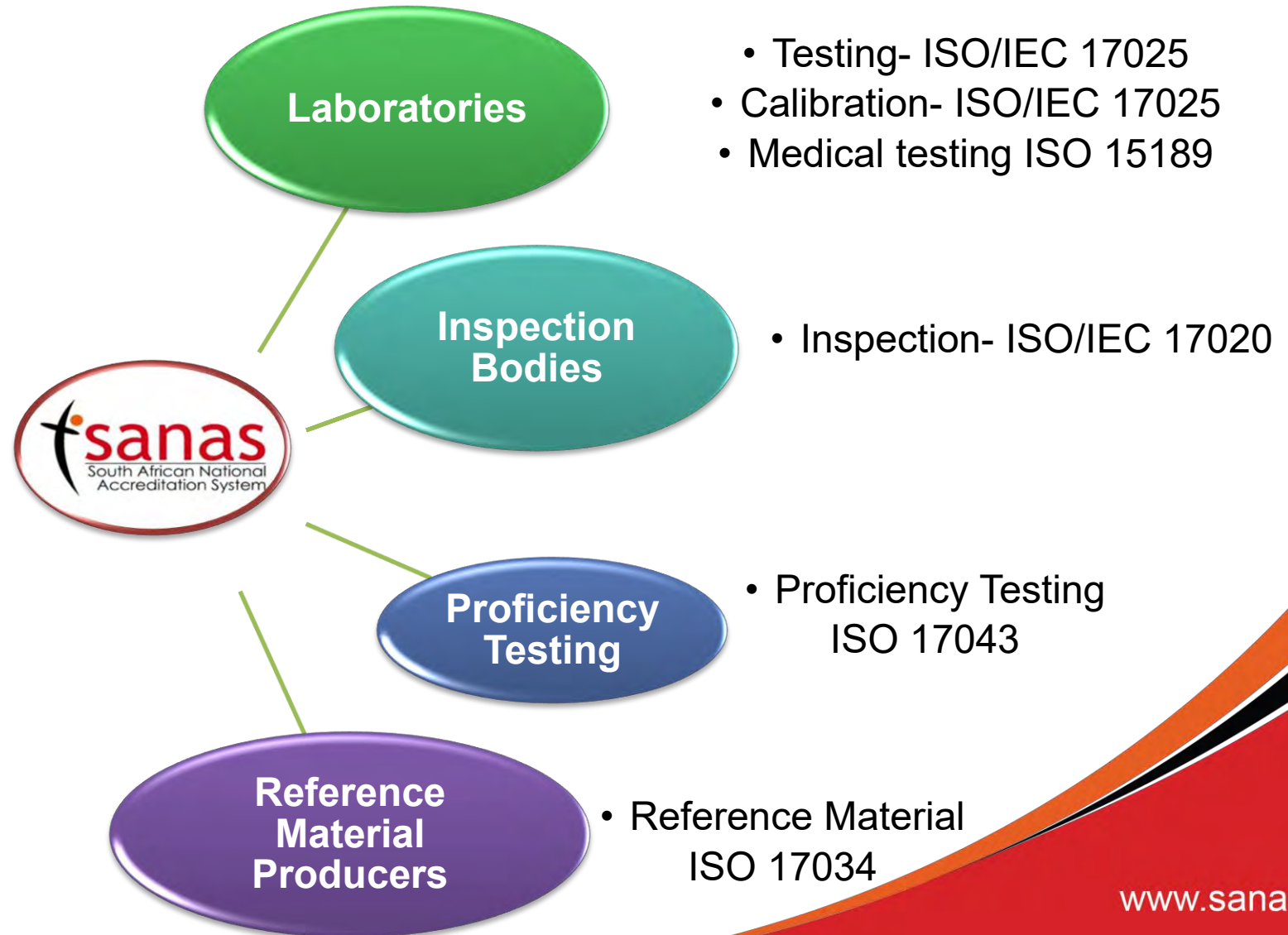


# INTERNATIONAL RECOGNITION

# SANAS - ILAC INTERNATIONAL RECOGNITION

Global acceptance of SANAS accredited results – International Laboratory Accreditation Cooperation (ILAC)

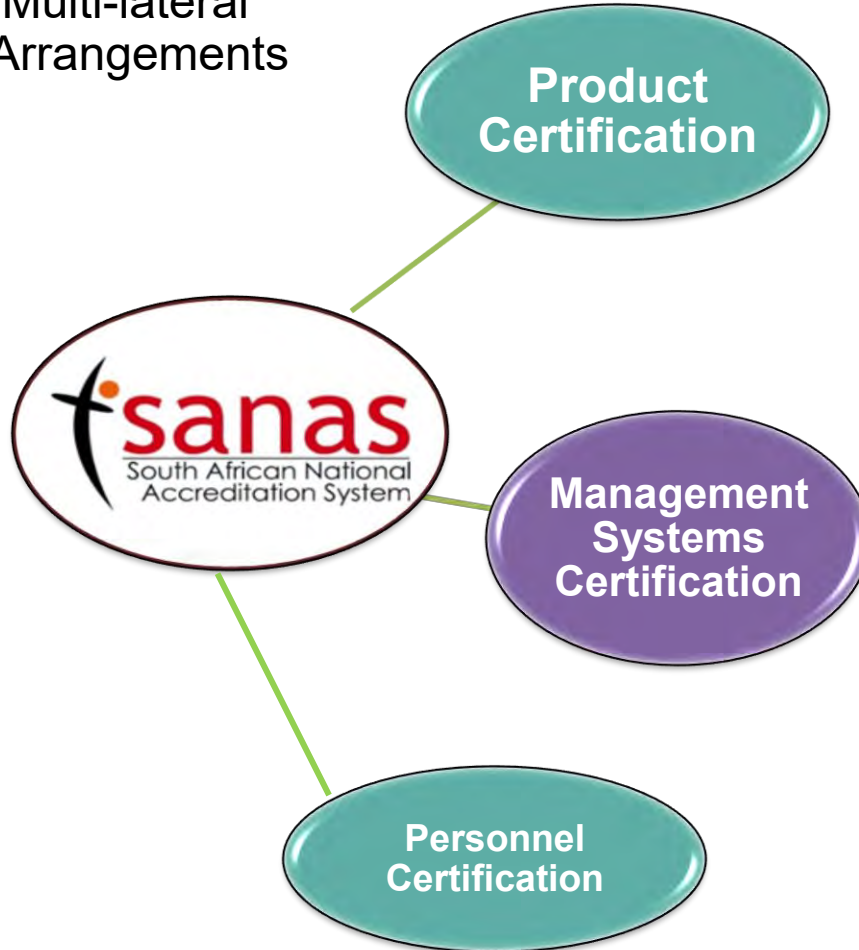
- SANAS is signatory to **all** existing ILAC Mutual Recognition Arrangements



# SANAS - IAF INTERNATIONAL RECOGNITION

Global acceptance of SANAS accredited results – International Accreditation Forum (IAF)

- SANAS is signatory to the existing IAF Multi-lateral Recognition Arrangements



- **Product Certification ISO/IEC 17065** (*Reconfirmed December 2019*)
- Global G.A.P. IFA General Requirements
- Global G.A.P.
- **Quality Management Systems ISO/IEC 17021-1**
- ISO/IEC 9001
- Environmental Management Systems ISO/IEC 14001
- Management System ISO/IEC 17021-2 & 3
- **Personnel Certification ISO/IEC 17024**

# **SANAS CONTRIBUTION TO GOVERNMENT PRIORITIES**

# SANAS ALIGNMENT TO NDP, MTSF & ERRP

- Through the provision of an internationally recognised and effective accreditation and monitoring system for the country, **SANAS supports the needs of the country's enterprises competing in a fast-paced global economy.**
- Through the development of new accreditation programmes **SANAS advances South Africa's industrial development goals and overall economic growth** through the increased competitiveness of South Africa's enterprises.
- Through the expansion of the scopes of recognition of SANAS, its accredited organisations, and its ability to influence international accreditation criteria, **SANAS contributes to enabling trade and investment.**
- Through the creation of new accreditation programmes and facilitating the expansion of laboratories, certification bodies and inspection bodies **SANAS supports the NDP and national sectorial priorities related to economic development and job creation.**
- Through strengthening the existing capacity to support infrastructure that facilitate the acceptance of accredited certification, inspection and testing in African market, **SANAS supports Regional integration and the implementation of the AfCFTA.**

# SANAS CONTRIBUTION TO OUTPUT TARGETS OF the dtic GROUP



## INDUSTRIAL PRODUCTION

1. Accreditation of CABs
2. Development of New Accreditation Programmes



## ENERGY

Accreditation of Energy  
Performance Certificate (EPC)  
Bodies



## EXPORTS AND TRADE

Participation in relevant PAQI  
structures, focused on reducing the  
technical barriers to trade within  
the AfCFTA



## GREEN ECONOMY

Accreditation of Validation and  
Verification Certification Bodies



## STAKEHOLDER ENGAGEMENT AND IMPACTS

Development of Case Studies



## RED TAPE AND STATE CAPABILITY

Improve turn-around times of  
issuing certificates and scopes of  
accreditation (average of 13 days)

# **OVERVIEW OF 2024/25 ANNUAL PERFORMANCE PLAN**

# SANAS 2024/25 APP AT A GLANCE



## PROGRAMME STRUCTURE

**4**

The 2024/25 priorities of SANAS is organised in 4 Programmes, namely, Administration, Corporate Services, Strategy & Development and lastly Accreditation which is the core Programme.



## KEY PERFORMANCE OUTPUTS AND OUTPUT INDICATORS

**15**

The APP sets out 15 Annual Targets for the 2024/25 FY. All Annual Targets have defined Output Indicators and quarterly targets



## MEDIUM TERM STRATEGIC FRAMEWORK (MTSF) 2019/2024 PRIORITIES

**2**

The work of SANAS contributes to MTSF priorities 2 and 7 which cover (i) economic transformation and job creation, and (ii) a better world and Africa. The 2024/2029 MTDP development is still in progress



## PRIORITISED LEGISLATION

**1**

In executing its mandate, SANAS is also guided by various legislation, regulations, standards, including but not limited to: Accreditation for Conformity Assessment, Calibration and Good Laboratory Practice Act, 2006 (Act No.19 of 2006)



## 2024/25 BUDGET ALLOCATION

**R 144 143 m**

Of a total budget of R144 143 00, a government grant of **only R32 118 000 is received from the dtic**

# PROGRAMME 1: ADMINISTRATION

**OUTCOME:**  
Organisational Sustainability

**2024/25 TARGET**  
80:20 SANAS income vs  
Government grant

**ENVISAGED IMPACT**  
Reduced reliance by SANAS on  
government funding

**OUTCOME:**  
Organisational Sustainability

**2024/25 TARGET**  
All eligible payments processed  
within an average of 19 days

**ENVISAGED IMPACT**  
Increased payment efficiency to  
SANAS creditors

**OUTCOME:**  
Government achieving policy  
objectives (Regional integration  
health, safety and the  
environment)

**2024/25 TARGET**  
At least 90% of the AFRAC  
Secretariat's Annual  
Performance Plan implemented

**ENVISAGED IMPACT**  
Acceptance of conformity  
assessment results to promote  
Regional integration

**OUTCOME:**  
Government achieving policy  
objectives (Regional integration  
health, safety and the  
environment)

**2024/25 TARGET**  
At least 90% of the SADCA  
Secretariat's Annual  
Performance Plan implemented

**ENVISAGED IMPACT**  
Acceptance of conformity  
assessment results to promote  
Regional integration

# PROGRAMME 2: CORPORATE SERVICES

**OUTCOME:**  
Organisation  
sustainability

**2024/25 TARGET**  
100% of the approved Annual  
Stakeholder Engagement Plan  
rolled out

**ENVISAGED IMPACT**  
Increased awareness of  
Accreditation and improved  
collaboration/partnerships to  
meet customer needs

**OUTCOME:**  
Organisation  
sustainability

**2024/25 TARGET**  
Maximum of 5% vacancy rate of  
the total funded positions for the  
financial year

**ENVISAGED IMPACT**  
Optimally capacitated SANAS to  
deliver on its mandate

# PROGRAMME 3: STRATEGY & DEVELOPMENT

## OUTCOME:

Government achieving policy objectives (Regional integration health, safety and the environment)

## 2024/25 TARGET

1 new Accreditation Programme initiated in collaboration with SAHPRA (Technical dossier evaluation)

## ENVISAGED IMPACT

Increased service offerings from SANAS to meet customer needs

## OUTCOME:

Government achieving policy objectives (Regional integration health, safety and the environment)

## 2024/25 TARGET

Biobank Programme developed

## ENVISAGED IMPACT

Increased service offerings from SANAS to meet customer needs

## OUTCOME:

Government achieving policy objectives (Regional integration health, safety and the environment)

## 2024/25 TARGET

4 quarterly progress reports developed on SANAS contribution to the relevant outputs of the dtic Group

## ENVISAGED IMPACT

Contribution by SANAS to the priorities of the dtic and Government

## OUTCOME:

Government achieving policy objectives (Regional integration health, safety and the environment)

## 2024/25 TARGET

Participation in 4 relevant initiatives of the PAQI structures, focused on reducing the technical barriers to trade within the African Continental Free Trade Area

## ENVISAGED IMPACT

Increased Regional integration and trade thus promoting economic development

# PROGRAMME 4: ACCREDITATION (1)

## **OUTCOME:**

Competitiveness of South  
Africa's enterprises

## **2024/25 TARGET**

95 additional CABs accredited

## **ENVISAGED IMPACT**

Confidence in international  
trade transactions,  
competitiveness and access to  
new markets

## **OUTCOME:**

Competitiveness of South  
Africa's enterprises

## **2024/25 TARGET**

3 accreditation applications  
processed for SAPS Forensic  
Science Laboratories

## **ENVISAGED IMPACT**

Increased quality control and  
public trust in the individual lab  
and the criminal justice system

## **OUTCOME:**

Competitiveness of South  
Africa's enterprises

## **2024/25 TARGET**

Certificates and scopes of  
accreditation issued within 13  
working days on average, after  
completion of approvals  
process

## **ENVISAGED IMPACT**

Reduced red tape and  
improved turn-around times

## PROGRAMME 4: ACCREDITATION (2)

### OUTCOME:

Organisation Sustainability

### 2024/25 TARGET

25 additional black assessors

### ENVISAGED IMPACT

Transformed assessor pool  
aligned to SA demographics

### OUTCOME:

Government achieving policy  
objectives (Regional Integration  
health, safety and environment)

### 2024/25 TARGET

Maintain Accreditation Services  
offered to Regulators through  
undertaking four engagements  
with relevant Regulators

### ENVISAGED IMPACT

Increased and sustained  
accreditation services within the  
Regulatory domain

# **FINANCIAL INFORMATION**

## **2024/25 FY**

# 2024/2025 MTEF ESTIMATES – Per ENE

Details	Medium-term estimate			
	2024/25	2025/26	2026/27	2027/28
R thousand				
Sales by market establishment	97,152	99,639	105,607	111,778
Other non-tax revenue	14,873	15,672	16,678	17,679
Transfers received	32,118	33,185	34,315	35,867
<b>Total revenue</b>	<b>144,143</b>	<b>148,496</b>	<b>156,600</b>	<b>165,324</b>
Expenses				
Compensation of employees	75,263	79,026	83,514	88,525
Goods and services	61,513	61,864	65,434	68,688
Depreciation	6,489	6,684	7,018	7,439
Transfers and subsidies	878	922	634	672
<b>Total expenses</b>	<b>144,143</b>	<b>148,496</b>	<b>156,600</b>	<b>165,324</b>
Surplus/(Deficit)	-	-	-	-

## 2024/2025 MTEF ESTIMATES – Per ENE

Details	Medium-term estimate			
	2024/25	2025/26	2026/27	2027/28
R thousand				
Administration	50,349	53,118	56,308	59,686
Accreditation Provision	70,411	71,073	74,772	78,586
Strategy and Development	9,384	9,900	10,395	11,019
Corporate services	13,999	14,405	15,125	16,033
<b>Total</b>	<b>144,143</b>	<b>148,496</b>	<b>156,600</b>	<b>165,324</b>

**THANK YOU**